



LASFITTINGEN WELDED FITTINGS



RVS FITTINGEN

Bij ons kunt u terecht voor al uw toebehoren in zowel RVS 304 als 316.

Onder Fittingen verstaan wij:

- Beugels (gepolijst of blank)
- BSP / NPT gasdraad fittingen
- Excentrische / Concentrische verlopen
- Flensen / Laskappen
- Lasbochten / T- stukken
- Las- en draadkoppelingen
- Kogelkranen / Afsluiters
- Zuivelkoppelingen

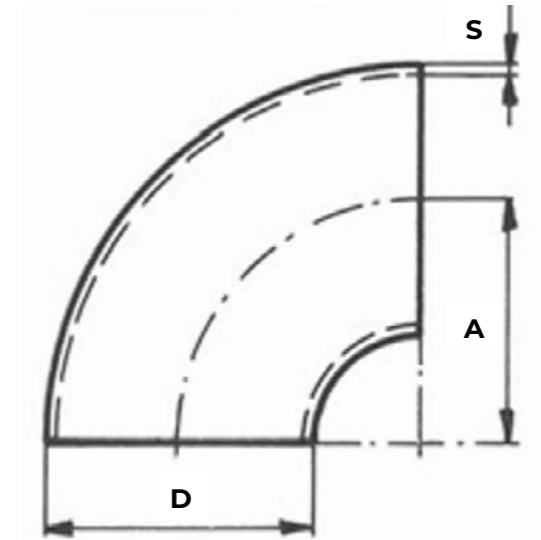
Verkrijgbare kwaliteiten: 1.4301/7 (304L), 1.4404 (316L), 1.4571 (316Ti)

Materialen kunnen geleverd worden met certificaten van 2.2 tot 3.1.

LASFITTING

Lasbochten	4
Lasbochten EN	8
Lasbochten Zuivel	14
Lasbochten ASTM	15
T-stukken EN	20
T-stukken Zuivel	26
T-stukken ASTM	32
Lasverlopen EN	38
Lasverlopen Zuivel	44
Lasverlopen ASTM	46
Laskappen EN	52
Laskappen Zuivel	54
Laskappen ASTM	56
Boordringen	58
Stub-Ends ASTM	62

ROESTVASTSTALEN LASBOCHT 3S STAINLESS STEEL WELDING BEND



D x S	A	KG
12,0 x 1,5	26	0,015
13,5 x 1,6	20,0	0,020
15,0 x 1,5	27,5	0,022
17,2 x 1,6	27,5	0,028
18,0 x 1,5	22,5	0,022
20,0 x 1,5	25	0,030
20,0 x 2,0	25	0,034
21,3 x 1,6	28	0,034
21,3 x 2,0	28	0,040
21,3 x 2,6	28	0,056
23,0 x 1,5	25	0,030
25,0 x 1,5	27,5	0,038
25,0 x 2,0	27,5	0,046
26,9 x 1,6	29	0,042
26,9 x 2,0	29	0,056
26,9 x 2,6	29	0,068
28,0 x 1,5	32,5	0,050
28,0 x 2,0	32,5	0,067
30,0 x 1,5	33,5	0,054
30,0 x 2,0	33,5	0,070
32,0 x 2,0	35	0,082
33,0 x 1,5	49,5	0,090
33,7 x 1,6	38	0,070
33,7 x 2,0	38	0,088
33,7 x 2,6	38	0,115
33,7 x 3,2	38	0,142
35,0 x 1,5	45	0,082

D x S	A	KG
35,0 x 2,0	45	0,114
38,0 x 1,5	45	0,088
38,0 x 1,5	57,2	0,121
38,0 x 2,0	45	0,120
40,0 x 1,5	45	0,098
40,0 x 2,0	45	0,132
42,4 x 1,6	48	0,112
42,4 x 2,0	48	0,123
42,4 x 2,6	48	0,190
42,4 x 3,2	48	0,234
43,0 x 1,5	47,5	0,108
43,0 x 1,5	64,5	0,160
44,5 x 2,0	51	0,160
44,5 x 2,6	51	0,208
48,3 x 1,6	57	0,152
48,3 x 2,0	57	0,200
48,3 x 2,6	57	0,258
48,3 x 3,2	57	0,318
50,0 x 2,0	71	0,274
50,8 x 1,5	76,2	0,225
51,0 x 1,5	67,5	0,192
51,0 x 2,0	67,5	0,252
52,0 x 1,5	70,0	0,200
53,0 x 1,5	72,5	0,224
54,0 x 2,0	70	0,278
57,0 x 2,0	75	0,310
57,0 x 3,0	75	0,480

D x S	A	KG
60,3 x 1,6	76	0,278
60,3 x 2,0	76	0,328
60,3 x 2,6	76	0,426
60,3 x 2,9	76	0,473
60,3 x 3,0	76	0,500
60,3 x 3,6	76	0,586
63,5 x 1,6	82,5	0,358
63,5 x 2,0	82,5	0,388
69,0 x 2,0	92	0,450
70,0 x 2,0	92	0,472
73,0 x 1,5	95	0,420
76,0 x 1,5	114,3	0,500
76,1 x 1,6	95	0,432
76,1 x 2,0	95	0,522
76,1 x 2,3	95	0,598
76,1 x 2,6	95	0,674
76,1 x 2,9	95	0,725
76,1 x 3,0	95	0,760
76,1 x 3,6	95	0,902
84,0 x 2,0	105	0,646
84,0 x 2,0	120	0,748
88,9 x 2,0	114	0,776
88,9 x 2,3	114	0,880
88,9 x 2,6	114	0,982
88,9 x 2,9	114	1,090
88,9 x 3,0	114	1,130
88,9 x 3,2	114	1,205

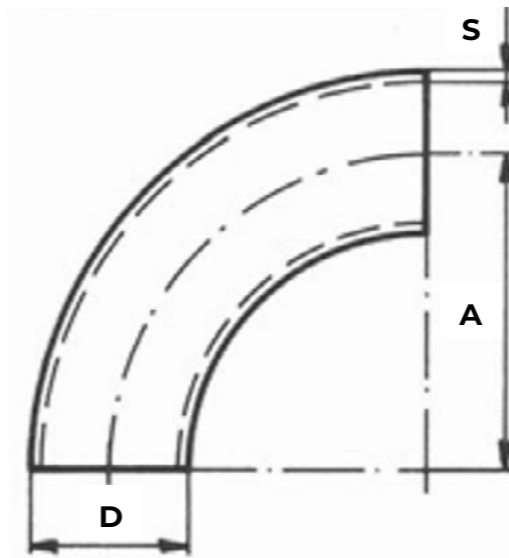
D x S	A	KG
101,6 x 2,0	133,5	1,005
104,0 x 2,0	150	1,146
108,0 x 2,0	142,5	1,207
108,0 x 3,0	142,5	1,810
108,0 x 4,0	142,5	2,414
114,3 x 2,0	152	1,292
114,3 x 2,6	152	1,806
114,3 x 2,9	152	1,852
114,3 x 3,0	152	1,916
114,3 x 3,6	152	2,300
129,0 x 2,0	187,5	1,830
133,0 x 3,0	181	2,750
139,7 x 2,0	190	1,970
139,7 x 2,6	190	2,534
139,7 x 2,9/3,0	190	3,010
139,7 x 4,0	190	4,010
154,0 x 2,0	225	2,712
156,0 x 3,0	225	3,916
159,0 x 3,0	216	3,900
159,0 x 4,0	216	5,150
168,3 x 2,0	229	2,926
168,3 x 2,5/2,6	229	4,038
168,3 x 2,9/3,0	229	4,328
168,3 x 4,0	229	5,900
204,0 x 2,0	300	4,730
205,0 x 2,5	300	6,764
206,0 x 3,0	300	6,860

**ROESTVASTSTALEN
LASBOCHT 3S**
STAINLESS STEEL
WELDING BEND

D x S	A	KG
219,1 x 2,0	305	4,872
219,1 x 2,5/2,6	305	6,290
219,1 x 3,0	305	7,442
254,0 x 2,0	375	8,416
255,0 x 2,5	375	9,080
256,0 x 3,0	375	11,916
273,0 x 2,0	381	8,010
273,0 x 3,0	381	12,020
304,0 x 2,0	450	10,520
306,0 x 3,0	450	16,840
323,9 x 3,0	457	17,140
356,0 x 3,0	533	22,400
406,0 x 3,0	610	28,580

**ROESTVASTSTALEN
LASBOCHT 5S**
STAINLESS STEEL
WELDING BEND

D x S	A	KG
17,2 x 1,6	43	0,040
18,0 x 1,5	49	0,050
20,0 x 1,5	50	0,055
21,3 x 1,6	42,5	0,060
21,3 x 2,0	42,5	0,065
21,3 x 2,6	42,5	0,070
23,0 x 1,5	55	0,065
25,0 x 1,5	55	0,080
26,9 x 1,6	57,5	0,090
26,9 x 2,0	57,5	0,110
26,9 x 2,6	57,5	0,145
28,0 x 1,5	65	0,100
30,0 x 2,0	69	0,125
33,7 x 2,0	72,5	0,180
33,7 x 3,2	72,5	0,280
35,0 x 2,0	75	0,190
38,0 x 2,0	85	0,240
40,0 x 2,0	95	0,270
42,4 x 2,0	92,5	0,280
42,4 x 2,6	92,5	0,365
42,4 x 3,2	92,5	0,450
44,5 x 2,0	100	0,310
48,3 x 2,0	107,5	0,390
48,3 x 3,2	107,5	0,630
54,0 x 2,0	122	0,460
60,3 x 2,0	135	0,610
60,3 x 2,6	135	0,775



D x S	A	KG
60,3 x 3,6	135	1,080
70,0 x 2,0	160	0,770
76,1 x 2,0	175	0,985
76,1 x 2,3	175	1,165
76,1 x 2,6	175	1,200
84,0 x 2,0	200	0,770
88,9 x 2,0	205	1,335
88,9 x 2,3	205	1,460
88,9 x 2,6	205	1,750
104,0 x 2,0	250	1,900
114,3 x 2,0	270	2,355
114,3 x 2,6	270	2,900
129,0 x 2,0	312,5	2,790
139,7 x 2,6	330	4,430
154,0 x 2,0	375	4,500
168,3 x 2,6	390	6,325
204,0 x 2,0	500	7,900
219,1 x 3,0	510	12,820
273,0 x 3,0	650	20,500
323,9 x 3,0	775	29,000

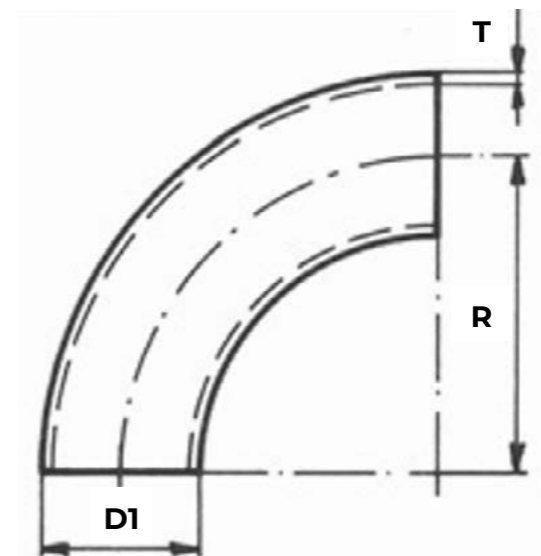
EN LASBOCHT 90° - GELAST EN ELBOWS 90° - WELDED

Uitvoeringen volgens / executions according to:

EN 10253-3 1 OR EN 10253-4, 5D / ISO 1,5D / DIN 2605 5S / D+100

Certificaten volgens bovenstaande normen en EN 10204 3.1

Certificates according to above mentioned standards and EN 10204 3.1



D1	T	INCH	GAS	R	KG	TYPE
13,5	1,60			21,0	0,016	1.5D
13,5	2,30	¼"	GAS	21,0	0,021	1.5D
15,0	1,50			22,0	0,018	1.5D
17,2	1,60			28,5	0,028	1.5D
17,2	1,60			43,0	0,040	5S
17,2	2,30	3/8"	GAS	28,5	0,038	1.5D
18,0	1,50			27,0	0,026	1.5D
20,0	1,50			30,0	0,033	1.5D
20,0	2,00			30,0	0,042	1.5D
21,3	1,60			31,8	0,039	1.5D
21,3	1,60			42,5	0,060	5S
21,3	2,00			31,8	0,048	1.5D
21,3	2,00			42,5	0,065	5S
21,3	2,60	½"	GAS	28,0	0,054	1.5D
21,3	2,65	½"	GAS	42,5	0,070	5S
23,0	1,50			34,5	0,044	1.5D
25,0	1,50			33,0	0,046	1.5D
25,0	2,00			33,0	0,060	1.5D
26,9	1,60			28,5	0,045	1.5D
26,9	1,60			57,5	0,090	5S
26,9	2,00			28,5	0,056	1.5D
26,9	2,00			57,5	0,110	5S
26,9	2,60	¾"	GAS	28,5	0,071	1.5D
26,9	2,65	¾"	GAS	57,5	0,145	5S
28,0	1,50			42,0	0,066	1.5D
28,0	2,00			42,0	0,086	1.5D
30,0	1,50			45,0	0,076	1.5D

D1	T	INCH	GAS	R	KG	TYPE
30,0	2,00			45,0	0,099	1.5D
30,0	2,00			69,0	0,125	5S
32,0	1,50			48,0	0,086	1.5D
32,0	2,00			48,0	0,113	1.5D
33,7	1,60			38,0	0,077	1.5D
33,7	1,60			72,5	0,080	5S
33,7	2,00			38,0	0,095	1.5D
33,7	2,00			72,5	0,180	5S
33,7	2,60			38,0	0,121	1.5D
33,7	3,20	1"	GAS	38,0	0,146	1.5D
33,7	3,25	1"	GAS	72,5	0,280	5S
35,0	1,50			52,5	0,104	1.5D
35,0	2,00			52,5	0,136	1.5D
38,0	2,00			57,0	0,161	1.5D
40,0	2,00			60,0	0,180	1.5D
40,0	2,00			95,0	0,270	5S
42,4	1,60			47,6	0,122	1.5D
42,4	2,00			47,6	0,151	1.5D
42,4	2,00			92,5	0,280	5S
42,4	2,60			47,6	0,194	1.5D
42,4	3,20	1 ¼"	GAS	47,6	0,235	1.5D
42,4	3,25	1 ¼"	GAS	92,5	0,450	5S
43,0	1,50			64,5	0,158	1.5D
44,0	2,00			140,0	0,400	D+100
44,5	2,00			66,0	0,221	1.5D
44,5	2,00			100,0	0,310	5S
48,3	1,60			57,1	0,168	1.5D

EN LASBOCHT 90° - GELAST EN ELBOWS 90° - WELDED

D1	T	INCH	GAS	R	KG	TYPE
48,3	2,00			57,1	0,208	1.5D
48,3	2,00			107,5	0,390	5S
48,3	2,60			57,1	0,267	1.5D
48,3	3,20	1 ½"	GAS	57,1	0,324	1.5D
48,3	3,25	1.½"	GAS	107,5	0,630	5S
50,0	1,50			75,0	0,215	1.5D
50,0	2,00			75,0	0,283	1.5D
50,8	2,00			75,0	0,220	1.5D
50,8	2,50			75,0	0,280	1.5D
53,0	1,50			79,5	0,241	1.5D
54,0	2,00			75,0	0,307	1.5D
54,0	2,00			150,0	0,500	D+100
57,0	2,00			77,0	0,333	1.5D
57,0	3,00			77,0	0,490	1.5D
60,3	1,60			76,2	0,281	1.5D
60,3	2,00			76,2	0,349	1.5D
60,3	2,00			135,0	0,610	5S
60,3	2,60			76,2	0,449	1.5D
60,3	2,90			76,2	0,499	1.5D
60,3	3,00			135,0	0,890	5S
60,3	3,60	2"	GAS	76,1	0,611	1.5D
60,3	3,65	2"	GAS	135,0	1,080	5S
63,5	2,00			94,5	0,457	1.5D
69,0	2,00			165,0	0,900	D+100
70,0	3,00			97,5	0,780	1.5D
76,1	2,00			96,0	0,559	1.5D
76,1	2,00			175,0	0,985	5S
76,1	2,60			96,0	0,721	1.5D
76,1	2,90			96,0	0,801	1.5D
76,1	2,90			175,0	1,439	5S
76,1	3,60	2 ½"	GAS	96,0	0,985	1.5D
76,1	3,65			175,0	1,769	5S
84,0	2,00			126,0	0,812	1.5D
84,0	2,00			180,0	1,200	D+100
88,9	2,00			114,5	0,782	1.5D

D1	T	INCH	GAS	R	KG	TYPE
88,9	2,00			205,0	1,335	5S
88,9	2,60			114,5	1,010	1.5D
88,9	3,00			114,5	1,160	1.5D
88,9	3,00			205,0	2,065	5S
88,9	4,00			114,5	1,529	1.5D
88,9	4,00			205,0	2,723	5S
101,6	2,00			133,5	1,045	1.5D
101,6	3,00			133,5	1,772	1.5D
104,0	2,00			150,0	1,203	1.5D
104,0	2,00			200,0	1,600	D+100
106,0	3,00			150,0	1,822	1.5D
106,0	3,00			200,0	2,400	D+100
108,0	2,00			142,0	1,183	1.5D
108,0	3,00			142,0	1,758	1.5D
108,0	4,00			142,0	2,350	1.5D
114,3	2,00			152,5	1,347	1.5D
114,3	2,00			270,0	2,355	5S
114,3	2,60			152,5	1,741	1.5D
114,3	2,60			270,0	2,900	5S
114,3	3,00			152,5	2,002	1.5D
114,3	3,00			270,0	3,452	5S
114,3	4,00			152,5	2,645	1.5D
129,0	2,00			188,0	1,877	1.5D
129,0	2,00			225,0	2,400	D+100
131,0	3,00			188,0	2,838	1.5D
131,0	3,00			225,0	3,500	D+100
139,7	2,00			191,0	2,068	1.5D
139,7	2,60			191,0	2,677	1.5D
139,7	2,60			330,0	4,430	5S
139,7	3,00			191,0	3,079	1.5D
139,7	4,00			191,0	4,076	1.5D
154,0	2,00			225,0	2,689	1.5D
154,0	2,00			250,0	3,100	D+100
156,0	3,00			225,0	4,060	1.5D
156,0	3,00			250,0	4,600	D+100

EN LASBOCHT 90° EN ELBOWS 90°

D1	T	INCH	GAS	R	KG	TYPE
159,0	3,00			216,0	3,974	1.5D
159,0	4,00			216,0	5,400	1.5D
168,3	2,00			229,0	2,994	1.5D
168,3	2,60			229,0	3,879	1.5D
168,3	2,60			390,0	6,325	5S
168,3	3,00			229,0	4,464	1.5D
168,3	4,00			229,0	5,917	1.5D
204,0	2,00			300,0	4,765	1.5D
204,0	2,00			300,0	4,800	D+100
205,0	2,50			300,0	6,000	D+100
206,0	3,00			300,0	7,182	1.5D
206,0	3,00			300,0	7,300	D+100
208,0	4,00			300,0	9,700	D+100
219,1	2,00			305,0	5,206	1.5D
219,1	2,60			305,0	6,749	1.5D
219,1	3,00			305,0	7,773	1.5D
219,1	3,00			510,0	12,820	5S
219,1	4,00			305,0	10,317	1.5D
254,0	2,00			375,0	7,430	1.5D
254,0	2,00			350,0	7,000	D+100
255,0	2,50			350,0	8,700	D+100
256,0	3,00			375,0	11,189	1.5D
256,0	3,00			350,0	10,500	D+100
273,0	2,00			381,0	8,118	1.5D
273,0	2,60			381,0	10,130	1.5D
273,0	3,00			381,0	12,132	1.5D
273,0	4,00			381,0	16,117	1.5D
304,0	2,00			450,0	10,685	1.5D
304,0	2,00			400,0	9,600	D+100
305,0	2,50			400,0	12,000	D+100
306,0	3,00			450,0	16,081	1.5D
306,0	3,00			400,0	14,400	D+100
323,9	2,00			457,0	11,566	1.5D
323,9	3,00			457,0	17,296	1.5D
323,9	4,00			457,0	22,989	1.5D

D1	T	INCH	GAS	R	KG	TYPE
355,6	3,00			534,0	22,206	1.5D
355,6	4,00			534,0	29,525	1.5D
356,0	3,00			450,0	19,000	D+100
406,4	3,00			610,0	29,022	1.5D
406,4	3,00			500,0	24,000	D+100
406,4	4,00			610,0	38,600	1.5D
408,0	4,00			500,0	32,000	D+100
456,0	3,00			550,0	30,000	D+100
457,2	2,90			686,0	36,700	1.5D
457,2	4,00			686,0	48,889	1.5D
506,0	3,00			600,0	37,000	D+100
508,0	2,90			762,0	45,384	1.5D
508,0	4,00			762,0	60,392	1.5D
508,0	4,00			600,0	48,000	D+100
606,0	3,00			700,0	49,000	D+100
608,0	4,00			700,0	66,000	D+100
609,6	2,90			914,0	65,389	1.5D
609,6	4,00			914,0	87,041	1.5D

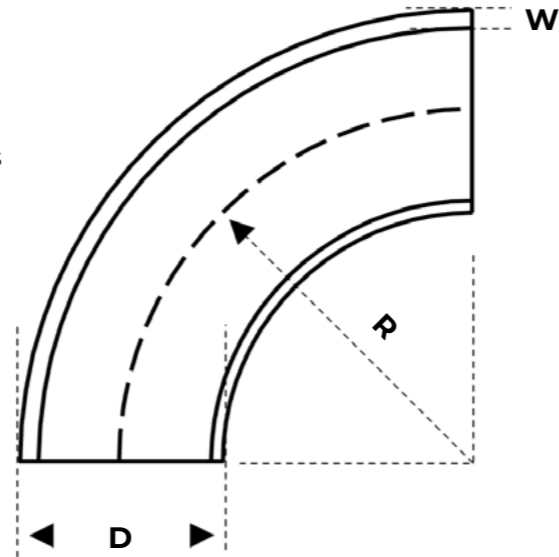
ZUIVEL LASBOCHT 90° DAIRY ELBOWS 90°

Gelaste roestvaststalen lasbochten 90° volgens
DIN 11852 en/of DIN 2605 met certificaten
volgens EN 10.204 3.1

Welded stainless steel BW elbows 90° acc. to
DIN 11852 and/or DIN 2605 with certificates EN
10.204 3.1

C = ongeslepen / unpolished

G = geslepen K320 / polished G320



DN / INCH	D x W	R
10 DIN	13,00 x 1,50	26,00
10 DIN	14,00 x 2,00	26,00
15 DIN	18,00 x 1,50	35,00
15 DIN	19,00 x 1,50	35,00
15 DIN	20,00 x 2,00	35,00
15 ISO	21,30 x 2,00	28,00
20 DIN	22,00 x 1,50	40,00
20 DIN	23,00 x 1,50	40,00
20 DIN	24,00 x 2,00	40,00
1"	25,40 x 1,25	27,50
25 DIN	28,00 x 1,50	50,00
25 DIN	29,00 x 1,50	50,00
25 DIN	30,00 x 2,00	50,00
1.¼"	31,80 x 1,20	35,00
32 DIN	34,00 x 1,50	55,00
32 DIN	35,00 x 1,50	55,00
32 DIN	36,00 x 2,00	55,00
1.½"	38,10 x 1,50	45,00
40 DIN	40,00 x 1,50	60,00
40 DIN	41,00 x 1,50	60,00
40 DIN	42,00 x 2,00	60,00
2"	50,80 x 1,50	67,50
50 DIN	52,00 x 1,50	70,00
50 DIN	53,00 x 1,50	70,00
50 DIN	54,00 x 2,00	70,00

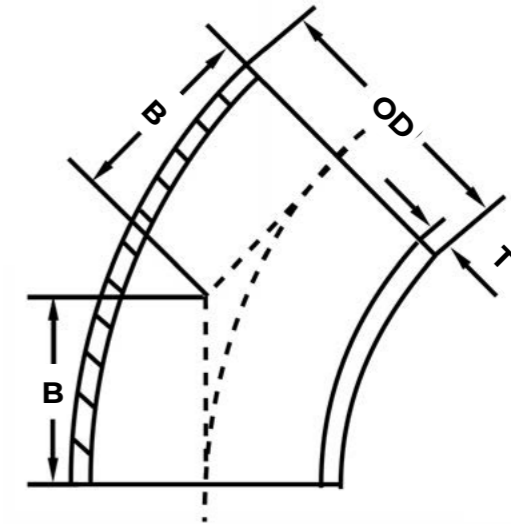
DN / INCH	D x W	R
2.½"	63,50 x 1,50	82,50
65 DIN	70,00 x 1,50	80,00
65 DIN	70,00 x 2,00	80,00
3"	76,10 x 1,50	96,00
80DIN	85,00 x 2,00	90,00
4"	101,60 x 1,50	133,50
4"	101,60 x 2,00	133,50
100DIN	104,00 x 2,00	100,00
125 DIN	129,00 x 2,00	187,50
150 DIN	154,00 x 2,00	225,00
200 DIN	204,00 x 2,00	300,00

ASTM LASBOCHT 90° ASTM ELBOWS 90°

Uitvoering en certificaten volgens /
Executions and certificates according to:
ASTM-A 403

w = gelast / welded

s = naadloos / seamless



OD	T	INCH - SCH	R	KG	TYPE
21,34	2,11	½" SCH 10S	38,10	0,061	LR
21,34	2,77	½" SCH 40S	38,10	0,078	LR
21,34	3,73	½" SCH 80S	38,10	0,100	LR
21,34	4,78	½" SCH 160	38,10	0,120	LR
26,67	2,11	¾" SCH 10S	38,10	0,078	LR
26,67	2,87	¾" SCH 40S	38,10	0,103	LR
26,67	3,91	¾" SCH 80S	38,10	0,104	LR
26,67	5,56	¾" SCH 160	38,10	0,140	LR
33,40	2,77	1" SCH 10S	25,40	0,094	SR
33,40	3,38	1" SCH 40S	25,40	0,118	SR
33,40	2,77	1" SCH 10S	38,10	0,128	LR
33,40	3,38	1" SCH 40S	38,10	0,154	LR
33,40	4,55	1" SCH 80S	38,10	0,204	LR
33,40	6,35	1" SCH 160	38,10	0,260	LR
42,16	2,77	1.¼" SCH 10S	31,75	0,152	SR
42,16	3,56	1.¼" SCH 40S	31,75	0,204	SR
42,16	2,77	1.¼" SCH 10S	47,75	0,206	LR
42,16	3,56	1.¼" SCH 40S	47,75	0,260	LR
42,16	4,85	1.¼" SCH 80S	47,75	0,349	LR
42,16	6,35	1.¼" SCH 160	47,75	0,400	LR
48,26	2,77	1.½" SCH 10S	38,10	0,189	SR
48,26	3,68	1.½" SCH 40S	38,10	0,245	SR
48,26	2,77	1.½" SCH 10S	57,15	0,283	LR
48,26	3,68	1.½" SCH 40S	57,15	0,368	LR
48,26	5,08	1.½" SCH 80S	57,15	0,507	LR

ASTM LASBOCHT 90°

ASTM ELBOWS 90°

OD	T	INCH - SCH		R	KG	TYPE
48,26	7,14	1.½"	SCH 160	57,15	0,680	LR
60,33	2,77	2"	SCH 10S	50,80	0,318	SR
60,33	3,91	2"	SCH 40S	50,80	0,434	SR
60,33	2,77	2"	SCH 10S	76,20	0,478	LR
60,33	3,91	2"	SCH 40S	76,20	0,652	LR
60,33	5,54	2"	SCH 80S	76,20	0,938	LR
60,33	8,74	2"	SCH 160	76,20	1,120	LR
73,03	3,05	2.½"	SCH 10S	63,50	0,541	SR
73,03	5,16	2.½"	SCH 40S	63,50	0,909	SR
73,03	3,05	2.½"	SCH 10S	95,25	0,812	LR
73,03	5,16	2.½"	SCH 40S	63,50	0,909	SR
73,03	3,05	2.½"	SCH 10S	95,25	0,812	LR
73,03	5,16	2.½"	SCH 40S	95,25	1,370	LR
73,03	7,01	2.½"	SCH 80S	95,25	1,790	LR
73,03	9,53	2.½"	SCH 160	95,25	2,240	LR
88,90	3,05	3"	SCH 10S	76,20	0,761	SR
88,90	5,49	3"	SCH 40S	76,20	1,360	SR
88,90	3,05	3"	SCH 10S	114,30	1,140	LR
88,90	5,49	3"	SCH 40S	114,30	2,040	LR
88,90	7,62	3"	SCH 80S	114,30	2,870	LR
88,90	11,13	3"	SCH 160	114,30	3,710	LR
101,60	3,05	3.½"	SCH 10S	88,90	1,020	SR
101,60	5,74	3.½"	SCH 40S	88,90	1,880	SR
101,60	3,05	3 ½"	SCH 10S	133,35	1,530	LR
101,60	5,74	3 ½"	SCH 40S	133,35	2,820	LR
101,60	8,08	3 ½"	SCH 80S	133,35	4,100	LR
114,30	3,05	4"	SCH 10S	101,60	1,310	SR
114,30	6,02	4"	SCH 40S	101,60	2,560	SR
114,30	3,05	4"	SCH 10S	152,40	1,970	LR
114,30	6,02	4"	SCH 40S	152,40	3,840	LR
114,30	8,56	4"	SCH 80S	152,40	5,620	LR
114,30	13,49	4"	SCH 160	152,40	7,920	LR
141,30	3,40	5"	SCH 10S	127,00	2,280	SR
141,30	6,55	5"	SCH 40S	127,00	4,320	SR
141,30	3,40	5"	SCH 10S	190,50	3,420	LR
141,30	6,55	5"	SCH 40S	190,50	6,480	LR

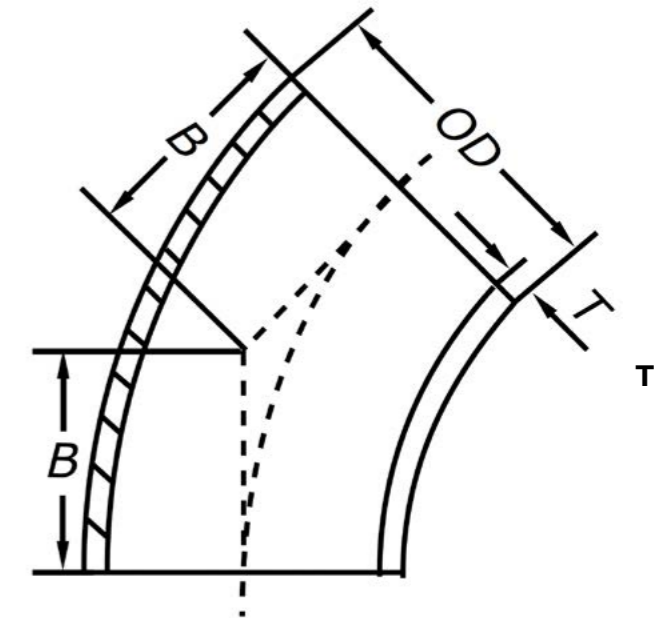
OD	T	INCH - SCH		R	KG	TYPE
141,30	9,53	5"	SCH 80S	190,50	9,690	LR
168,28	3,40	6"	SCH 10S	152,40	3,240	SR
168,28	7,11	6"	SCH 40S	152,40	6,630	SR
168,28	3,40	6"	SCH 10S	228,60	4,870	LR
168,28	7,11	6"	SCH 40S	228,60	9,940	LR
168,28	10,97	6"	SCH 80S	228,60	15,990	LR
219,08	3,76	8"	SCH 10S	203,20	6,680	SR
219,08	8,18	8"	SCH 40S	203,20	13,400	SR
219,08	3,76	8"	SCH 10S	304,08	10,000	LR
219,08	8,18	8"	SCH 40S	304,08	20,100	LR
219,08	12,70	8"	SCH 80S	304,08	32,160	LR
273,05	4,19	10"	SCH 10S	254,00	10,400	SR
273,05	9,27	10"	SCH 40S	254,00	23,600	SR
273,05	4,19	10"	SCH 10S	381,00	15,500	LR
273,05	9,27	10"	SCH 40S	381,00	35,400	LR
273,05	12,70	10"	SCH 80S	381,00	49,830	LR
323,85	4,57	12"	SCH 10S	304,80	16,700	SR
323,85	9,53	12"	SCH 40S	304,80	37,500	SR
323,85	4,57	12"	SCH 10S	457,20	25,900	LR
323,85	9,53	12"	SCH 40S	457,20	56,200	LR
323,85	12,70	12"	SCH 80S	457,20	72,480	LR
355,60	4,78	14"	SCH 10S	355,60	24,550	SR
355,60	9,53	14"	SCH 40S	355,60	48,330	SR
355,60	4,78	14"	SCH 10S	533,40	34,600	LR
355,60	9,53	14"	SCH 40S	533,40	66,360	LR
406,40	4,78	16"	SCH 10S	406,40	32,000	SR
406,40	9,53	16"	SCH 40S	406,40	63,370	SR
406,40	4,78	16"	SCH 10S	609,60	45,200	LR
406,40	9,53	16"	SCH 40S	609,60	87,110	LR
457,20	4,78	18"	SCH 10S	685,80	57,300	LR
457,20	9,53	18"	SCH 40S	685,80	110,670	LR
508,00	5,56	20"	SCH 10S	762,00	82,000	LR
508,00	9,53	20"	SCH 40S	762,00	136,990	LR
609,60	6,35	24"	SCH 10S	914,40	136,000	LR
609,60	9,53	24"	SCH 40S	914,40	198,050	LR

ASTM LASBOCHT 45° ASTM ELBOWS 45°

Uitvoering en certificaten volgens / Executions and certificates according to: ASTM-A 403

W = gelast / welded

S = naadloos / seamless



OD	T	INCH - SCH	R	KG	TYPE
21,34	2,11	½" SCH 10S	15,88	0,030	LR
21,34	2,77	½" SCH 40S	15,88	0,039	LR
21,34	3,73	½" SCH 80S	15,88	0,050	LR
26,67	2,11	¾" SCH 10S	19,00	0,039	LR
26,67	2,87	¾" SCH 40S	19,00	0,052	LR
26,67	3,91	¾" SCH 80S	19,00	0,078	LR
33,40	2,77	1" SCH 10S	22,22	0,064	LR
33,40	3,38	1" SCH 40S	22,22	0,077	LR
33,40	4,55	1" SCH 80S	22,22	0,100	LR
42,16	2,77	1¼" SCH 10S	25,40	0,103	LR
42,16	3,56	1¼" SCH 40S	25,40	0,130	LR
42,16	4,85	1¼" SCH 80S	25,40	0,177	LR
48,26	2,77	1½" SCH 10S	28,45	0,142	LR
48,26	3,68	1½" SCH 40S	28,45	0,184	LR
48,26	5,08	1½" SCH 80S	28,45	0,254	LR
60,33	2,77	2" SCH 10S	35,05	0,239	LR
60,33	3,91	2" SCH 40S	35,05	0,326	LR
60,33	5,54	2" SCH 80S	35,05	0,471	LR
73,03	3,05	2½" SCH 10S	44,45	0,406	LR
73,03	5,16	2½" SCH 40S	44,45	0,683	LR
73,03	7,01	2½" SCH 80S	44,45	0,897	LR
88,90	3,05	3" SCH 10S	50,80	0,571	LR
88,90	5,49	3" SCH 40S	50,80	1,020	LR
88,90	7,62	3" SCH 80S	50,80	1,440	LR
101,60	3,05	3½" SCH 10S	57,15	0,764	LR

OD	T	INCH - SCH	R	KG	TYPE
101,60	5,74	3½" SCH 40S	57,15	1,410	LR
101,60	8,08	3½" SCH 80S	57,15	2,050	LR
114,30	3,05	4" SCH 10S	63,50	0,985	LR
114,30	6,02	4" SCH 40S	63,50	1,920	LR
114,30	8,56	4" SCH 80S	63,50	2,810	LR
141,30	3,40	5" SCH 10S	79,25	1,710	LR
141,30	6,55	5" SCH 40S	79,25	3,240	LR
168,28	3,40	6" SCH 10S	95,25	2,430	LR
168,28	7,11	6" SCH 40S	95,25	4,970	LR
219,08	3,76	8" SCH 10S	127,00	5,010	LR
219,08	8,18	8" SCH 40S	127,00	10,100	LR
273,05	4,19	10" SCH 10S	158,75	7,770	LR
273,05	9,27	10" SCH 40S	158,75	17,700	LR
323,85	4,57	12" SCH 10S	190,50	12,500	LR
323,85	9,53	12" SCH 40S	190,50	28,100	LR
355,60	4,78	14" SCH 10S	222,25	28,630	LR
355,60	9,53	14" SCH 40S	222,25	32,930	LR
406,40	4,78	16" SCH 10S	254,00	34,840	LR
406,40	9,53	16" SCH 40S	254,00	43,310	LR

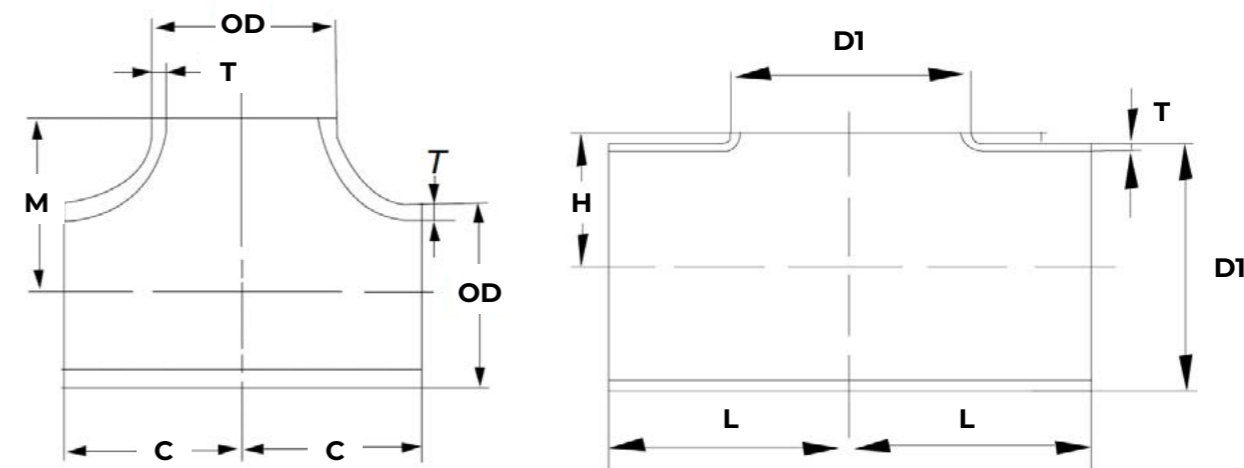
EN VERLOOP T-STUK EN T-PIECES

Uitvoeringen volgens EN 10253-3, getrokken (TB) of gelijkbenig v-gelast (VW) /

Executions according to EN 10253-3, drawn (TB) or equal v-welded (VW)

Certificaten volgens bovenstaande normen en EN 10204 3.1 /

Certificates according to above mentioned standards and EN 10204 3.1



D1	T	H	L	KG	TYPE
20,0	2,00	11,3	25,5		TB
21,3	2,00	12,0	25,5	0,044	TB
21,3	2,00	25,2		0,055	EN
21,3	2,65	25,2		0,094	EN
25,0	2,00	14,0	28,5		TB
25,0	2,00	33,0		0,111	EN
26,9	2,00	15,0	28,5	0,063	TB
26,9	2,00	28,5		0,118	EN
26,9	2,65	28,5		0,152	EN
30,0	2,00	17,0	38,0	0,057	TB
30,0	2,00	38,0		0,143	EN
33,7	2,00	19,0	38,0	0,107	TB
33,7	2,00	38,0		0,150	EN
33,7	2,60	38,0		0,195	EN
33,7	3,25	38,0		0,246	EN
38,0	2,00	20,5	47,5		TB
38,0	2,00	50,0		0,243	EN
40,0	2,00	22,0	47,5		TB
42,4	2,00	24,0	47,5	0,179	TB
42,4	2,00	47,6		0,320	EN
42,4	2,60	47,6		0,416	EN
42,4	3,25	47,6		0,536	EN
44,5	2,00	25,6	47,5		TB
44,5	2,00	60,0		0,352	EN
48,3	2,00	26,0	57,0	0,242	TB
48,3	2,00	57,2		0,442	EN
48,3	2,60	57,2		0,575	EN

D1	T	H	L	KG	TYPE
48,3	3,25	57,2		0,626	EN
54,0	2,00	30,0	57,0	0,218	TB
54,0	2,00	73,0		0,512	EN
57,0	2,00	31,8	57,0	0,350	TB
60,3	2,00	34,0	63,5	0,345	TB
60,3	2,00	63,5		0,582	EN
60,3	2,60	63,5		0,757	EN
60,3	3,00	34,0	63,5	0,509	TB
60,3	3,00	63,5		0,952	EN
60,3	3,65	63,5		1,070	EN
70,0	2,00			0,384	TB
76,1	2,00	42,0	76,0	0,532	TB
76,1	2,00	76,0		0,603	EN
76,1	2,60	76,0		0,784	EN
76,1	3,00	42,0	76,0	0,751	TB
76,1	3,00	76,0		1,120	EN
76,1	3,65	76,0			EN
84,0	2,00	46,5	85,5	0,633	TB
84,0	2,00	80,0		0,802	EN
88,9	2,00	48,5	85,5	0,679	TB
88,9	2,00	86,0		0,680	EN
88,9	2,60	86,0		0,884	EN
88,9	3,00	48,5	85,5	0,970	TB
88,9	3,00	48,5	85,5	0,970	TB
88,9	3,00	86,0		1,720	EN
104,0	2,00	56,3	105,0	0,954	TB
104,0	2,00	90,0	-	1,302	EN

EN VERLOOP T-STUK EN T-PIECES

D1	T	H	L	KG	TYPE
106,0	3,00	56,5	105,0	1,431	TB
108,0	2,00	58,3	105,0	1,250	TB
108,0	3,00	58,3	105,0	1,900	TB
114,3	2,00	63,0	105,0	1,095	TB
114,3	2,00	105,0			EN
114,3	2,60	105,0		1,647	EN
114,3	3,00	63,0	105,0	1,642	TB
114,3	3,00	105,0		5,760	EN
129,0	2,00	70,0	124,0	1,423	TB
139,7	2,00	76,0	124,0	1,514	TB
139,7	2,60	124,0		2,427	EN
139,7	3,00	76,0	124,0	2,254	TB
139,7	3,00	124,0		3,950	EN
139,7	4,00	124,0		3,733	EN
154,0	2,00	84,0	143,0	2,030	TB
156,0	3,00	85,0	143,0	3,119	TB
159,0	4,00	135,0			EN
168,3	2,00	92,0	142,0	2,129	TB
168,3	3,00	92,0	142,0	3,133	TB
168,3	3,00	143,0		5,060	EN
168,3	4,00	143,0		5,067	EN
204,0	2,00	110,0	178,0	3,794	TB
206,0	3,00	110,0	178,0	4,690	TB
219,1	2,00	122,0	179,0	3,371	TB
219,1	3,00	122,0	179,0	4,908	TB
219,1	3,00	178,0			EN
219,1	4,00	178,0		8,667	EN
254,0	2,00	250,0		7,210	VW
256,0	3,00	250,0		9,030	VW
273,0	2,00	216,0		5,800	VW
273,0	3,00	216,0		8,700	VW
273,0	4,00	216,0		10,470	VW
304,0	2,00	300,0		10,407	VW
306,0	3,00	300,0		15,610	VW
323,9	2,00	254,0		12,350	VW
323,9	3,00	254,0		18,530	VW

D1	T	H	L	KG	TYPE
355,6	3,00	279,0		22,160	VW
406,4	3,00	305,0		27,920	VW
457,2	2,90	343,0			VW
508,0	2,90	381,0			VW
609,6	2,90	432,0			VW

EN VERLOOP T-STUK EN T-PIECES

Uitvoeringen volgens ISO getrokken (TB) /

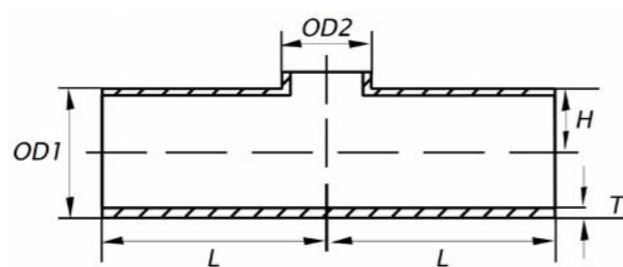
Executions according to ISO drawn (TB)

Certificaten volgens bovenstaande

normen en EN 10204 3.1 /

Certificates according to above

mentioned standards and EN 10204 3.1



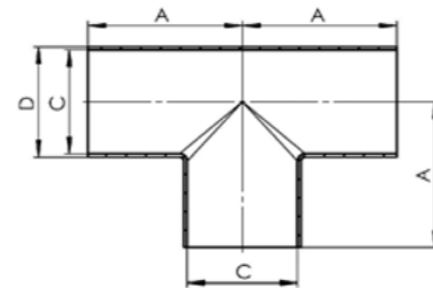
OD1	OD2	T	H	L	KG
21,3	17,2	2	12	25,5	0,044
26,9	17,2	2	15	28,5	0,064
26,9	21,3	2	15	28,5	0,064
33,7	17,2	2	19	38,0	0,116
33,7	21,3	2	19	38,0	0,116
33,7	26,9	2	19	38,0	0,112
42,4	21,3	2	24	47,5	0,176
42,4	26,9	2	24	47,5	0,172
42,4	33,7	2	24	47,5	0,188
48,3	21,3	2	26	57,0	0,248
48,3	26,9	2	26	57,0	0,248
48,3	33,7	2	26	57,0	0,098
48,3	42,4	2	26	57,0	0,236
60,3	21,3	2	34	63,5	0,348
60,3	26,9	2	34	63,5	0,338
60,3	33,7	2	34	63,5	0,332
60,3	42,4	2	34	63,5	0,354
60,3	48,3	2	34	63,5	0,328
76,1	21,3	2	42	76,0	1,180
76,1	26,9	2	42	76,0	0,530
76,1	33,7	2	42	76,0	0,546
76,1	42,4	2	42	76,0	0,542
76,1	48,3	2	42	76,0	0,514
76,1	60,3	2	42	76,0	0,524
76,1	60,3	3	42	76,0	1,680

OD1	OD2	T	H	L	KG
88,9	33,7	2	48,5	85,5	0,679
88,9	42,4	2	48,5	85,5	0,680
88,9	48,3	2	48,5	85,5	0,782
88,9	60,3	2	48,5	85,5	0,706
88,9	60,3	3	48,5	85,5	1,040
88,9	76,1	2	48,5	85,5	0,668
88,9	76,1	3	48,5	85,5	0,970
114,3	48,3	2	63	105,0	1,090
114,3	60,3	2	63	105,0	1,080
114,3	60,3	3	63	105,0	1,600
114,3	76,1	2	63	105,0	1,070
114,3	76,1	3	63	105,0	1,640
114,3	88,9	2	63	105,0	1,080
114,3	88,9	3	63	105,0	1,630
139,7	60,3	2	76	124,0	3,400
139,7	60,3	3	76	124,0	5,120
139,7	76,1	2	76	124,0	1,600
139,7	76,1	3	76	124,0	2,330
139,7	88,9	2	76	124,0	1,580
139,7	88,9	3	76	124,0	2,390
139,7	114,3	2	76	124,0	1,530
139,7	114,3	3	76	124,0	2,460
168,3	76,1	2	92	142,0	2,180
168,3	76,1	3	92	142,0	3,320
168,3	88,9	2	92	142,0	2,129
168,3	88,9	3	92	142,0	3,270
168,3	114,3	2	92	142,0	2,120
168,3	114,3	3	92	142,0	3,290
168,3	139,7	2	92	142,0	2,210
168,3	139,7	3	92	142,0	3,190
219,1	114,3	2	122	179,0	3,560
219,1	114,3	3	122	179,0	5,320
219,1	139,7	2	122	179,0	3,500
219,1	139,7	3	122	179,0	5,320
219,1	168,3	2	122	179,0	7,500
219,1	168,3	3	122	179,0	5,160
219,1	168,3	4	122	179,0	8,560

ZUIVEL T-STUK DAIRY T-PIECES

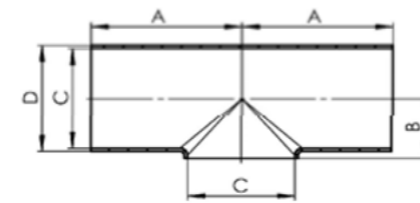
T-STUK DIN 11852 LANG | TEE DIN 11852 EQUAL

NW	A	B	C	D	E
25	50		26	29	
32	55		31	34	
32	55		32	35	
40	60		37	40	
40	60		38	41	
50	70		49	52	
50	70		50	53	
65	80		66	70	
80	90		81	85	
100	100		100	104	
125	187,5		125	129	
150	225		150	154	
200	300		200	204	



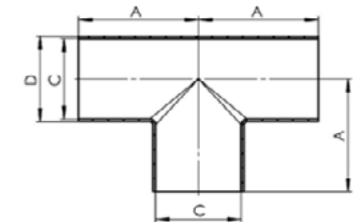
T-STUK DIN 11852 KORT | TEE DIN 11852 SHORT

NW	A	B	C	D	E
25	50	16	26	29	
32	55	19	31	34	
32	55	19,5	32	35	
40	60	22	37	40	
40	60	23	38	41	
50	70	29	49	52	
50	70	30	50	53	
65	80	40	66	70	
80	90	47,5	81	85	
100	100	58,5	100	104	
125	187,5	74	125	129	
150	225	90	150	154	
200	300	115	200	204	



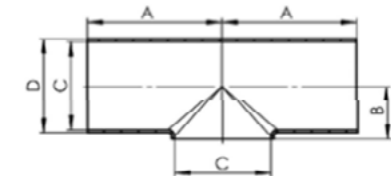
T-STUK SMS LANG | TEE SMS EQUAL

NW	A	B	C	D	E
1,5"	70		34,8	38	
2"	82		47,8	51	
2,5"	105		60,3	63,5	
3"	110		72,8	76	
4"	150		97,6	101,6	



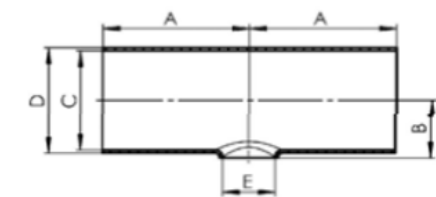
T-STUK SMS KORT | TEE SMS SHORT

NW	A	B	C	D	E
1"	55	12	22,6	25	
1,5"	70	22	34,8	38	
2"	82	29	47,8	51	
2,5"	105	35	60,3	63,5	
3"	110	41	72,8	76	
4"	150	55	97,6	101,6	



VERLOOP T-STUK SMS KORT | REDUCING TEE SMS SHORT

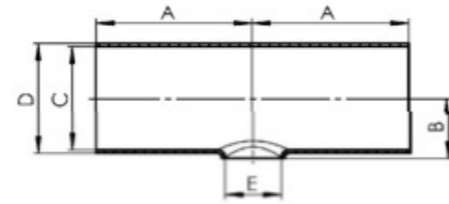
NW	A	B	C	D	E
2-1"	72	29	47,8	51	
2-1,5"	72	29	47,8	51	
2,5-1"	105	34,5	60,3	63,5	
2,5-1,5"	105	35	60,3	63,5	
2,5-2"	105	36	60,3	63,5	
3-1,5"	110	41	72,8	76	
3-2"	110	42	72,8	76	
3-2,5"	100	43	72,8	76	
4-2"	150	57	97,6	101,6	
4-2,5"	150	58	97,6	101,6	
4-3"	150	58	97,6	101,6	



ZUIVEL T-STUK DAIRY T-PIECES

VERLOOP T-STUK DIN 11852 KORT | REDUCING TEE DIN 11852 SHORT (1/2)

NW	A	B	C	D	E
25-20	50	16,5	25	28	22
25-20	50	17	26	29	23
32-25	55	19	31	34	28
32-25	55	19,5	32	35	29
40-25	60	22	38	40	28
40-25	60	22,5	37	41	29
40-32	60	22	38	40	34
40-32	60	22,5	49	41	35
50-25	70	29	50	52	28
50-25	70	29,5	49	53	29
50-40	70	29	50	52	40
50-40	70	29,5	66	53	41
65-25	80	39	66	70	28
65-25	80	39	66	70	29
65-40	80	39	66	70	40
65-40	80	39	66	70	41
65-50	80	39	66	70	52
65-50	80	39,0	66	70	53
80-25	90	46,5	81	85	28
80-25	90	46,5	81	85	29
80-40	90	46,5	81	85	40
80-40	90	46,5	81	85	41
80-50	90	46,5	81	85	52
80-50	90	46,5	81	85	53
80-65	90	46,5	81	85	70
100-40	100	56	100	104	40
100-40	100	56	100	104	41
100-50	100	56	100	104	52
100-50	100	56	100	104	53
100-65	100	56	100	104	70
100-80	100	56	100	104	85
125-50	187,5	68,5	125	129	52
125-50	187,5	68,5	125	129	53
125-65	187,5	68,5	125	129	70
125-80	187,5	68,5	125	129	85
125-100	187,5	68,5	125	129	104

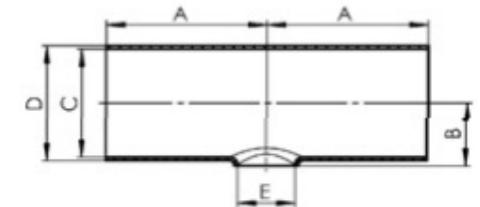


VERLOOP T-STUK DIN 11852 KORT | REDUCING TEE DIN 11852 SHORT (2/2)

NW	A	B	C	D	E
150-50	225	81	150	154	52
150-50	225	81	150	154	53
150-65	225	81	150	154	70
150-80	225	81	150	154	85
150-100	225	81	150	154	104
150-125	225	81	150	154	129
150-125	225	81	150	154	129

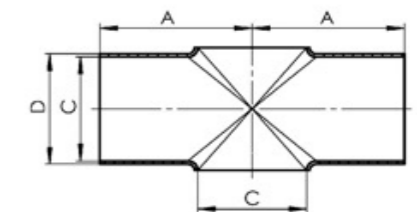
KRUISSTUK DIN 11852 KORT | CROSS DIN 11852 SHORT

NW	A	B	C	D	E
25	50	16	26	29	
32	55	19	31	34	
32	55	19,5	32	35	
40	60	22	37	40	
40	60	23	38	41	
50	70	29	49	52	
50	70	30	50	53	
65	80	40	66	70	
80	90	47,5	81	85	
100	100	58,5	100	104	
125	187,5	74	125	129	
150	225	90	150	154	
200	300	115	200	204	



KRUISSTUK SMS KORT | CROSS SMS SHORT

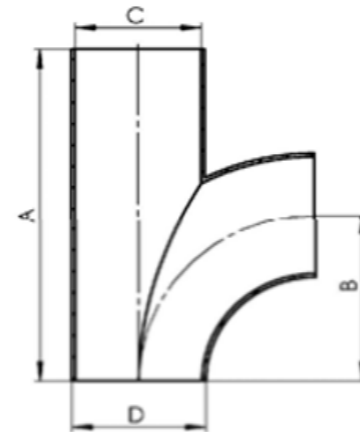
NW	A	B	C	D	E
1,5"	80		34,8	38	
2"	90		47,8	51	
2,5"	100		60,3	63,5	
3"	120		72,8	76	
4"	150		97,6	101,6	



ZUIVEL T-STUK DAIRY T-PIECES

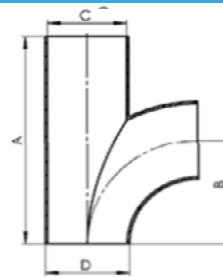
STROOM T-STUK DIN 11852 | TEE BEND DIN 11852

NW	A	B	C	D	E
25	100	50	25	28	
25	100	50	26	29	
32	110	55	31	34	
32	110	55	32	35	
40	120	60	37	40	
40	120	60	38	41	
50	140	70	49	52	
50	140	70	50	53	
65	160	80	66	70	
80	180	90	81	85	
100	200	100	100	104	



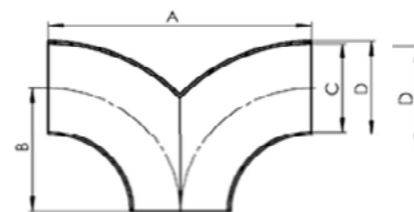
STROOMSTUK SMS | TEE BEND SMS

NW	A	B	C	D	E
1"	55	27,5	22,2	25,4	
1,5"	104	52	34,9	38,1	
2"	150	75	47,6	50,8	
2,5"	180	90	60,3	63,5	
3"	190	95	73	76,1	
4"	266	133	97,6	101,6	



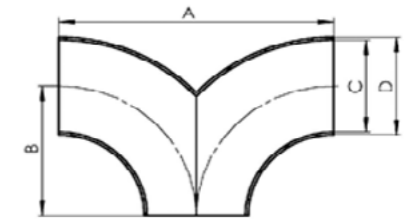
BROEKSTUK DIN 11852 | DOUBLE TEE BEND DIN 11852

NW	A	B	C	D	E
25 25	100 100	50 50	25 25	28 28	
25 25	100 100	50 50	26 26	29 29	
32 32	110 110	55 55	31 31	34 34	
32 32	110 110	55 55	32 32	35 35	
40 40	120 120	60 60	37 37	40 40	
40 40	120 120	60 60	38 38	41 41	
50 50	140 140	70 70	49 49	52 52	
50 50	140 140	70 70	50 50	53 53	
65 65	160 160	80 80	66 66	70 70	
80 80	180 180	90 90	81 81	85 85	
100 100	200 200	100 100	100 100	104 104	



BROEKSTUK SMS | DOUBLE TEE BEND SMS

NW	A	B	C	D	E
1"	55	27,5	22,2	25,4	
1,5"	104	52	34,9	38,1	
2"	150	75	47,6	50,8	
2,5"	180	90	60,3	63,5	
3"	190	95	73	76,1	
4"	266	133	97,6	101,6	



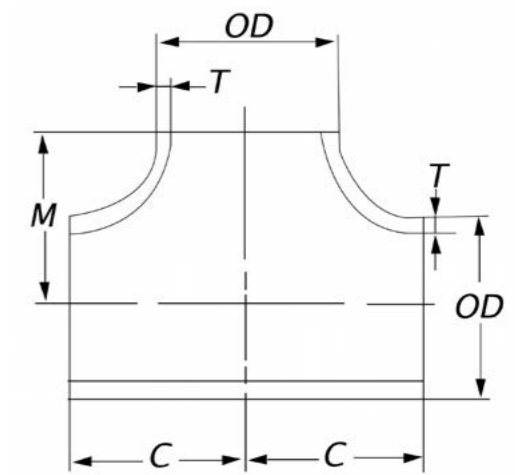
ASTM VERLOOP T-STUK

ASTM REDUCING T-PIECES

Uitvoeringen en certificaten volgens / Executions and certificates according to: ASTM-A 403

w = gelast / welded

s = naadloos / seamless



OD	T	INCH-SCH		C/M	KG
21,34	2,11	½"	SCH 10S	25,40	0,090
21,34	2,77	½"	SCH 40S	25,40	0,181
21,34	3,73	½"	SCH 80S	25,40	0,204
21,34	4,78	½"	SCH 160	25,40	0,130
26,67	2,11	¾"	SCH 10S	28,70	0,129
26,67	2,87	¾"	SCH 40S	28,70	0,258
26,67	3,91	¾"	SCH 80S	28,70	0,294
26,67	5,56	¾"	SCH 160	28,70	0,220
33,40	2,77	1"	SCH 10S	38,10	0,223
33,40	3,38	1"	SCH 40S	38,10	0,256
33,40	4,55	1"	SCH 80S	38,10	0,399
33,40	6,35	1"	SCH 160	38,10	0,492
42,16	2,77	1¼"	SCH 10S	47,75	0,356
42,16	3,56	1¼"	SCH 40S	47,75	0,463
42,16	4,85	1¼"	SCH 80S	47,75	0,725
42,16	6,35	1¼"	SCH 160	47,75	0,808
48,26	2,77	1½"	SCH 10S	57,15	0,497
48,26	3,68	1½"	SCH 40S	57,15	0,648
48,26	5,08	1½"	SCH 80S	57,15	1,020
48,26	7,14	1½"	SCH 160	57,15	1,310
60,33	2,77	2"	SCH 10S	63,50	0,681
60,33	3,91	2"	SCH 40S	63,50	0,893
60,33	5,54	2"	SCH 80S	63,50	1,810
60,33	8,74	2"	SCH 160	63,50	1,930
73,03	3,05	2½"	SCH 10S	76,20	1,200
73,03	5,16	2½"	SCH 40S	76,20	1,980
73,03	7,01	2½"	SCH 80S	76,20	3,170
73,03	9,53	2½"	SCH 160	76,20	3,700
88,90	3,05	3"	SCH 10S	85,85	1,570

OD	T	INCH-SCH		C/M	KG
88,90	5,49	3"	SCH 40S	85,85	2,610
88,90	7,62	3"	SCH 80S	85,85	3,850
88,90	11,13	3"	SCH 160	85,85	4,747
101,60	3,05	3 ½"	SCH 10S	95,00	1,920
101,60	5,74	3 ½"	SCH 40S	95,00	3,610
101,60	8,08	3 ½"	SCH 80S	95,00	5,080
114,30	3,05	4"	SCH 10S	104,90	2,460
114,30	6,02	4"	SCH 40S	104,90	4,760
114,30	8,56	4"	SCH 80S	104,90	7,110
141,30	3,40	5"	SCH 10S	123,95	4,040
141,30	6,55	5"	SCH 40S	123,95	7,840
141,30	9,53	5"	SCH 80S	123,95	11,780
168,28	3,40	6"	SCH 10S	143,00	5,500
168,28	7,11	6"	SCH 40S	143,00	9,540
168,28	10,97	6"	SCH 80S	143,00	18,120
219,08	3,76	8"	SCH 10S	177,80	11,070
219,08	8,18	8"	SCH 40S	117,80	19,560
219,08	12,70	8"	SCH 80S	117,80	33,980
273,05	4,19	10"	SCH 10S	215,90	19,870
273,05	9,27	10"	SCH 40S	215,90	32,610
273,05	12,70	10"	SCH 80S	215,90	47,570
323,85	4,57	12"	SCH 10S	254,00	27,860
323,85	9,53	12"	SCH 40S	254,00	56,650
323,85	12,70	12"	SCH 80S	254,00	72,480
355,60	4,78	14"	SCH 10S	279,40	35,980
355,60	9,53	14"	SCH 40S	279,40	71,210
406,40	4,78	16"	SCH 10S	304,80	44,690
406,40	9,53	16"	SCH 40S	304,80	88,560

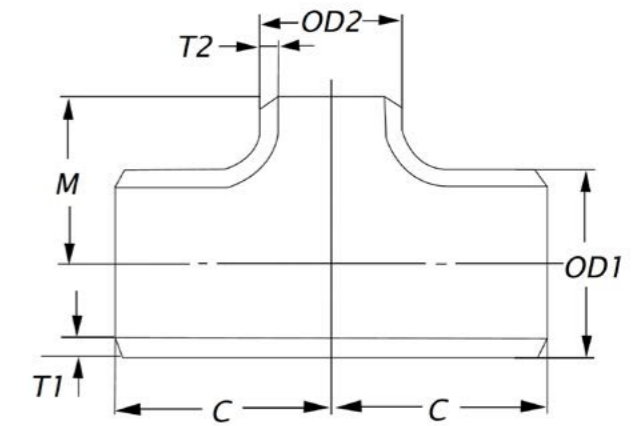
ASTM VERLOOP T-STUK

ASTM REDUCING T-PIECES

Uitvoeringen en certificaten volgens / Executions and certificates according to: ASTM-A 403

w = gelast / welded

s = naadloos / seamless



OD	T	INCH-SCH	C/M	KG
60,32	× 26,67 × 3,91 × 2,87	2" × ¾"	SCH 40S	63,50 44,45 1,110
60,32	× 26,67 × 5,54 × 3,91	2" × ¾"	SCH 80S	63,50 44,45 1,440
60,32	× 26,67 × 8,71 × 5,54	2" × ¾"	SCH 160	63,50 44,45 1,940
60,32	× 33,40 × 2,77 × 2,77	2" × 1"	SCH 10S	63,50 50,80 0,725
60,32	× 33,40 × 3,91 × 3,38	2" × 1"	SCH 40S	63,50 50,80 1,140
60,32	× 33,40 × 5,54 × 4,55	2" × 1"	SCH 80S	63,50 50,80 1,460
60,32	× 33,40 × 8,71 × 6,35	2" × 1"	SCH 160	63,50 50,80 1,720
60,32	× 42,16 × 2,77 × 2,77	2" × 1¼"	SCH 10S	63,50 57,15 0,747
60,32	× 42,16 × 3,91 × 3,56	2" × 1¼"	SCH 40S	63,50 57,15 1,180
60,32	× 42,16 × 5,54 × 4,85	2" × 1¼"	SCH 80S	63,50 57,15 1,510
60,32	× 42,16 × 8,71 × 6,35	2" × 1¼"	SCH 160	63,50 57,15 1,770
60,32	× 48,26 × 2,77 × 2,77	2" × 1½"	SCH 10S	63,50 60,45 0,766
60,32	× 48,26 × 3,91 × 3,68	2" × 1½"	SCH 40S	63,50 60,45 1,230
60,32	× 48,26 × 5,54 × 5,08	2" × 1½"	SCH 80S	63,50 60,45 1,570
60,32	× 48,26 × 8,71 × 7,14	2" × 1½"	SCH 160	63,50 60,45 2,120
73,02	× 33,40 × 3,05 × 2,77	2½" × 1"	SCH 10S	76,20 57,15 1,070
73,02	× 33,40 × 5,16 × 3,38	2½" × 1"	SCH 40S	76,20 57,15 1,810
73,02	× 33,40 × 7,01 × 4,55	2½" × 1"	SCH 80S	76,20 57,15 2,080
73,02	× 42,16 × 3,05 × 2,77	2½" × 1¼"	SCH 10S	76,20 64,00 1,080
73,02	× 42,16 × 5,16 × 3,56	2½" × 1¼"	SCH 40S	76,20 64,00 1,890
73,02	× 42,16 × 7,01 × 4,85	2½" × 1¼"	SCH 80S	76,20 64,00 2,250
73,02	× 48,26 × 3,05 × 2,77	2½" × 1½"	SCH 10S	76,20 66,80 1,180
73,02	× 48,26 × 5,16 × 3,68	2½" × 1½"	SCH 40S	76,20 66,80 2,080
73,02	× 48,26 × 7,01 × 5,08	2½" × 1½"	SCH 80S	76,20 66,80 2,610
73,02	× 60,32 × 3,05 × 2,77	2½" × 2"	SCH 10S	76,20 69,85 1,210
73,02	× 60,32 × 5,16 × 3,91	2½" × 2"	SCH 40S	76,20 69,85 2,120
73,02	× 60,32 × 7,01 × 5,54	2½" × 2"	SCH 80S	76,20 69,85 2,660
88,90	× 33,40 × 3,05 × 2,77	3" × 1"	SCH 10S	85,85 69,85 1,380
88,90	× 33,40 × 5,49 × 3,38	3" × 1"	SCH 40S	85,85 69,85 2,460

OD	T	INCH-SCH	C/M	KG
88,90	× 33,40 × 7,62 × 4,55	3" × 1"	SCH 80S	85,85 69,85 3,310
88,90	× 42,16 × 3,05 × 2,77	3" × 1¼"	SCH 10S	85,85 69,85 1,450
88,90	× 42,16 × 5,49 × 3,56	3" × 1¼"	SCH 40S	85,85 69,85 2,600
88,90	× 42,16 × 7,62 × 4,85	3" × 1¼"	SCH 80S	85,85 69,85 3,600
88,90	× 48,26 × 3,05 × 2,77	3" × 1½"	SCH 10S	85,85 73,15 1,600
88,90	× 48,26 × 5,49 × 3,68	3" × 1½"	SCH 40S	85,85 73,15 2,980
88,90	× 48,26 × 7,62 × 5,08	3" × 1½"	SCH 80S	85,85 73,15 3,840
88,90	× 60,32 × 3,05 × 2,77	3" × 2"	SCH 10S	85,85 76,20 1,630
88,90	× 60,32 × 5,49 × 3,91	3" × 2"	SCH 40S	85,85 76,20 3,010
88,90	× 60,32 × 7,62 × 5,54	3" × 2"	SCH 80S	85,85 76,20 3,860
88,90	× 73,02 × 3,05 × 3,05	3" × 2½"	SCH 10S	85,85 82,55 1,690
88,90	× 73,02 × 5,49 × 5,16	3" × 2½"	SCH 40S	85,85 82,55 3,150
88,90	× 73,02 × 7,62 × 7,01	3" × 2½"	SCH 80S	85,85 82,55 3,970
101,60	× 60,32 × 3,05 × 2,77	3½" × 2"	SCH 10S	95,25 83,00 1,730
101,60	× 60,32 × 5,74 × 3,91	3½" × 2"	SCH 40S	95,25 83,00 3,250
101,60	× 73,02 × 3,05 × 3,05	3½" × 2½"	SCH 10S	95,25 89,00 1,760
101,60	× 73,02 × 5,74 × 5,16	3½" × 2½"	SCH 40S	95,25 89,00 3,320
101,60	× 88,90 × 3,05 × 3,05	3½" × 3"	SCH 10S	95,25 92,00 1,820
101,60	× 88,90 × 5,74 × 5,49	3½" × 3"	SCH 40S	95,25 92,00 3,430
114,30	× 48,26 × 3,05 × 2,77	4" × 1½"	SCH 10S	104,90 85,85 2,510
114,30	× 48,26 × 6,02 × 3,68	4" × 1½"	SCH 40S	104,90 85,85 5,040
114,30	× 48,26 × 8,56 × 5,08	4" × 1½"	SCH 80S	104,90 85,85 6,630
114,30	× 60,32 × 3,05 × 2,77	4" × 2"	SCH 10S	104,90 88,90 2,530
114,30	× 60,32 × 6,02 × 3,91	4" × 2"	SCH 40S	104,90 88,90 5,080
114,30	× 60,32 × 8,56 × 5,54	4" × 2"	SCH 80S	104,90 88,90 6,700
114,30	× 73,02 × 3,05 × 3,05	4" × 2½"	SCH 10S	104,90 95,25 2,590
114,30	× 73,02 × 6,02 × 5,16	4" × 2½"	SCH 40S	104,90 95,25 5,220
114,30	× 73,02 × 8,56 × 7,01	4" × 2½"	SCH 80S	104,90 95,25 6,790
114,30	× 88,90 × 3,05 × 3,05	4" × 3"	SCH 10S	104,90 98,55 2,610

ASTM VERLOOP T-STUK ASTM REDUCING T-PIECES

OD	T	INCH-SCH	C/M	KG
114,30 × 88,90 × 6,02 × 5,49	4" × 3"	SCH 40S	104,90	98,55 5,270
114,30 × 88,90 × 8,56 × 7,62	4" × 3"	SCH 80S	104,90	98,55 6,930
114,30 × 101,60 × 3,05 × 3,05	4" × 3.½"	SCH 10S	104,90	2,790
114,30 × 101,60 × 6,02 × 5,74	4" × 3.½"	SCH 40S	104,90	4,700
141,30 × 88,90 × 3,40 × 3,05	5" × 3"	SCH 10S	123,95	111,25 4,170
141,30 × 88,90 × 6,55 × 5,49	5" × 3"	SCH 40S	123,95	111,25 8,130
141,30 × 114,30 × 3,40 × 3,05	5" × 4"	SCH 10S	123,95	117,60 4,240
141,30 × 114,30 × 6,55 × 6,02	5" × 4"	SCH 40S	123,95	117,60 8,360
168,27 × 60,32 × 3,40 × 2,77	6" × 2"	SCH 10S	143,00	5,930
168,27 × 60,32 × 7,11 × 3,91	6" × 2"	SCH 40S	143,00	10,010
168,27 × 73,02 × 3,40 × 3,05	6" × 2.½"	SCH 10S	143,00	120,65 5,690
168,27 × 73,02 × 7,11 × 5,16	6" × 2.½"	SCH 40S	143,00	120,65 11,870
168,27 × 88,90 × 3,40 × 3,05	6" × 3"	SCH 10S	143,00	123,95 5,750
168,27 × 88,90 × 7,11 × 5,49	6" × 3"	SCH 40S	143,00	123,95 11,920
168,27 × 114,30 × 3,40 × 3,05	6" × 4"	SCH 10S	143,00	130,30 5,850
168,27 × 114,30 × 7,11 × 6,02	6" × 4"	SCH 40S	143,00	130,30 12,100
168,27 × 141,30 × 3,40 × 3,40	6" × 5"	SCH 10S	143,00	136,65 5,920
168,27 × 141,30 × 7,11 × 6,55	6" × 5"	SCH 40S	143,00	136,65 12,340
219,08 × 114,30 × 3,76 × 3,05	8" × 4"	SCH 10S	177,80	155,70 9,800
219,08 × 114,30 × 8,18 × 6,02	8" × 4"	SCH 40S	177,80	155,70 21,260
219,08 × 168,27 × 3,76 × 3,40	8" × 6"	SCH 10S	177,80	168,40 9,900
219,08 × 168,27 × 8,18 × 7,11	8" × 6"	SCH 40S	177,80	168,40 21,620



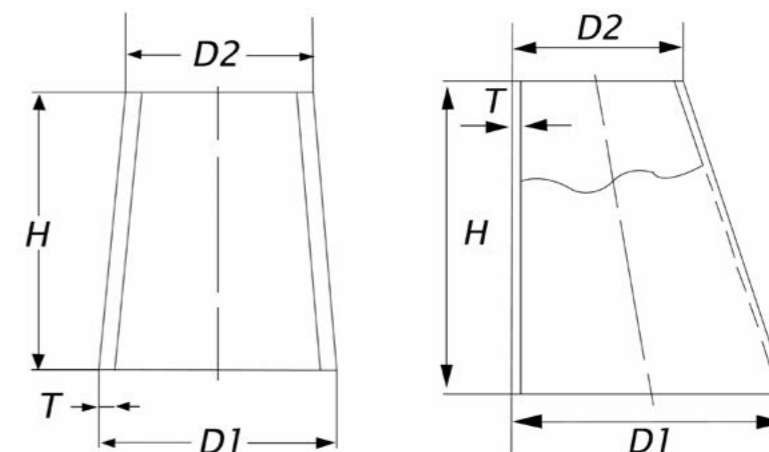
EN LASVERLOOP EN REDUCER

Concen- en excentrisch gelast | Concen- and eccentric welded

Uitvoeringen volgens 3 (D-d) / Executions according to 3 (D-d)

Certificaten volgens bovenstaande norm en EN 10204 3.1 /

Certificates according to above mentioned standard and EN 10204 3.1



D1	x	D2	x	T	x	T	H	KG	TYPE
17,2	x	13,5	x	2,0	x	2,0		0,008	3 (D-d)
21,3	x	13,5	x	2,0	x	2,0		0,018	3 (D-d)
21,3	x	17,2	x	2,0	x	2,0	12,0	0,012	3 (D-d)
25,0	x	20,0	x	2,0	x	2,0		0,014	3 (D-d)
26,9	x	17,2	x	2,0	x	2,0	29,0	0,032	3 (D-d)
26,9	x	20,0	x	2,0	x	2,0			3 (D-d)
26,9	x	21,3	x	2,0	x	2,0	17,0	0,020	3 (D-d)
30,0	x	20,0	x	2,0	x	2,0		0,034	3 (D-d)
30,0	x	25,0	x	2,0	x	2,0		0,018	3 (D-d)
33,7	x	13,7	x	2,0	x	2,0	60,0	0,071	3 (D-d)
33,7	x	17,2	x	2,0	x	2,0	50,0	0,063	3 (D-d)
33,7	x	21,3	x	2,0	x	2,0	37,0	0,051	3 (D-d)
33,7	x	26,9	x	2,0	x	2,0	20,0	0,031	3 (D-d)
38,0	x	20,0	x	2,0	x	2,0		0,076	3 (D-d)
38,0	x	25,0	x	2,0	x	2,0		0,058	3 (D-d)
42,4	x	13,5	x	2,0	x	2,0			3 (D-d)
42,4	x	17,2	x	2,0	x	2,0	76,0	0,113	3 (D-d)
42,4	x	21,3	x	2,0	x	2,0	63,0	0,101	3 (D-d)
42,4	x	26,9	x	2,0	x	2,0	46,0	0,080	3 (D-d)
42,4	x	33,7	x	2,0	x	2,0	26,0	0,050	3 (D-d)
44,5	x	20,0	x	2,0	x	2,0		0,116	3 (D-d)
44,5	x	25,0	x	2,0	x	2,0		0,102	3 (D-d)
44,5	x	30,0	x	2,0	x	2,0		0,078	3 (D-d)
48,3	x	21,3	x	2,0	x	2,0	81,0	0,142	3 (D-d)
48,3	x	26,9	x	2,0	x	2,0	64,0	0,121	3 (D-d)
48,3	x	33,7	x	2,0	x	2,0	44,0	0,090	3 (D-d)
48,3	x	42,4	x	2,0	x	2,0	18,0	0,040	3 (D-d)
54,0	x	30,0	x	2,0	x	2,0		0,138	3 (D-d)
54,0	x	44,0	x	2,0	x	2,0	30,0	0,074	3 (D-d)
60,3	x	21,3	x	2,0	x	2,0	117,0	0,240	3 (D-d)

D1	x	D2	x	T	x	T	H	KG	TYPE
60,3	x	26,9	x	2,0	x	2,0	100,0	0,219	3 (D-d)
60,3	x	33,7	x	2,0	x	2,0	80,0	0,188	3 (D-d)
60,3	x	42,4	x	2,0	x	2,0	54,0	0,139	3 (D-d)
60,3	x	48,3	x	2,0	x	2,0	36,0	0,098	3 (D-d)
70,0	x	44,5	x	2,0	x	2,0			3 (D-d)
70,0	x	54,0	x	2,0	x	2,0			3 (D-d)
76,1	x	26,9	x	2,0	x	2,0	148,0	0,382	3 (D-d)
76,1	x	33,7	x	2,0	x	2,0	127,0	0,351	3 (D-d)
76,1	x	42,4	x	2,0	x	2,0	101,0	0,301	3 (D-d)
76,1	x	42,4	x	3,0	x	3,0	101,0	0,451	3 (D-d)
76,1	x	48,3	x	2,0	x	2,0	83,0	0,261	3 (D-d)
76,1	x	48,3	x	3,0	x	3,0	83,0	0,391	3 (D-d)
76,1	x	60,3	x	2,0	x	2,0	47,0	0,162	3 (D-d)
76,1	x	60,3	x	3,0	x	3,0	47,0	0,244	3 (D-d)
84,0	x	44,0	x	2,0	x	2,0	120,0	0,386	3 (D-d)
84,0	x	54,0	x	2,0	x	2,0	90,0	0,312	3 (D-d)
84,0	x	70,0	x	2,0	x	2,0		0,142	3 (D-d)
88,9	x	33,7	x	2,0	x	2,0	166,0	0,510	3 (D-d)
88,9	x	42,4	x	2,0	x	2,0	139,0	0,458	3 (D-d)
88,9	x	48,3	x	2,0	x	2,0	122,0	0,420	3 (D-d)
88,9	x	60,3	x	2,0	x	2,0	86,0	0,322	3 (D-d)
88,9	x	60,3	x	3,0	x	3,0	86,0	0,482	3 (D-d)
88,9	x	76,1	x	2,0	x	2,0	38,0	0,159	3 (D-d)
88,9	x	76,1	x	3,0	x	3,0	38,0	0,239	3 (D-d)
101,6	x	76,1	x	2,0	x	2,0		0,326	3 (D-d)
104,0	x	54,0	x	2,0	x	2,0	150,0	0,595	3 (D-d)
104,0	x	70,0	x	2,0	x	2,0		0,392	3 (D-d)
104,0	x	76,1	x	2,0	x	2,0		0,342	3 (D-d)
104,0	x	84,0	x	2,0	x	2,0	60,0	0,283	3 (D-d)
114,3	x	33,7	x	2,0	x	2,0	242,0	0,899	3 (D-d)

EN LASVERLOOP EN REDUCER

	D1	×	D2	×	T	×	T	H	KG	TYPE
114,3	×	42,4	×	2,0	×	2,0		216,0	0,849	3 (D-d)
114,3	×	48,3	×	2,0	×	2,0		198,0	0,809	3 (D-d)
114,3	×	60,3	×	2,0	×	2,0		162,0	0,711	3 (D-d)
114,3	×	60,3	×	3,0	×	3,0		162,0	1,066	3 (D-d)
114,3	×	76,1	×	2,0	×	2,0		114,0	0,555	3 (D-d)
114,3	×	76,1	×	3,0	×	3,0		114,0	0,832	3 (D-d)
114,3	×	88,9	×	2,0	×	2,0		76,0	0,389	3 (D-d)
114,3	×	88,9	×	3,0	×	3,0		76,0	0,583	3 (D-d)
114,3	×	88,9	×	4,0	×	4,0			0,720	3 (D-d)
129,0	×	54,0	×	2,0	×	2,0		225,0	1,034	3 (D-d)
129,0	×	70,0	×	2,0	×	2,0			0,306	3 (D-d)
129,0	×	76,1	×	2,0	×	2,0			0,792	3 (D-d)
129,0	×	84,0	×	2,0	×	2,0		135,0	0,722	3 (D-d)
129,0	×	104,0	×	2,0	×	2,0		75,0	0,439	3 (D-d)
139,7	×	48,3	×	2,0	×	2,0		274,0	1,295	3 (D-d)
139,7	×	60,3	×	2,0	×	2,0		238,0	1,197	3 (D-d)
139,7	×	60,3	×	3,0	×	3,0		238,0	1,795	3 (D-d)
139,7	×	76,1	×	2,0	×	2,0		191,0	1,034	3 (D-d)
139,7	×	76,1	×	3,0	×	3,0		191,0	1,551	3 (D-d)
139,7	×	88,9	×	2,0	×	2,0		152,0	0,875	3 (D-d)
139,7	×	88,9	×	3,0	×	3,0		152,0	1,313	3 (D-d)
139,7	×	114,3	×	2,0	×	2,0		76,0	0,486	3 (D-d)
139,7	×	114,3	×	3,0	×	3,0		76,0	0,729	3 (D-d)
139,7	×	114,3	×	4,0	×	4,0			0,980	3 (D-d)
154,0	×	54,0	×	2,0	×	2,0		300,0	1,567	3 (D-d)
154,0	×	70,0	×	2,0	×	2,0			2,050	3 (D-d)
154,0	×	84,0	×	2,0	×	2,0		210,0	1,255	3 (D-d)
154,0	×	104,0	×	2,0	×	2,0		150,0	0,972	3 (D-d)
154,0	×	129,0	×	2,0	×	2,0		75,0	0,533	3 (D-d)
168,3	×	60,3	×	2,0	×	2,0		324,0	1,861	3 (D-d)
168,3	×	60,3	×	3,0	×	3,0		324,0	2,791	3 (D-d)
168,3	×	76,1	×	2,0	×	2,0		277,0	1,698	3 (D-d)
168,3	×	76,1	×	3,0	×	3,0		277,0	2,547	3 (D-d)
168,3	×	88,9	×	2,0	×	2,0		238,0	1,539	3 (D-d)
168,3	×	88,9	×	3,0	×	3,0		238,0	2,308	3 (D-d)
168,3	×	114,3	×	2,0	×	2,0		162,0	1,150	3 (D-d)

	D1	×	D2	×	T	×	T	H	KG	TYPE
168,3	×	114,3	×	3,0	×	3,0		162,0	1,725	3 (D-d)
168,3	×	114,3	×	4,0	×	4,0			2,350	3 (D-d)
168,3	×	139,7	×	2,0	×	2,0		86,0	0,664	3 (D-d)
168,3	×	139,7	×	3,0	×	3,0		86,0	0,996	3 (D-d)
168,3	×	139,7	×	4,0	×	4,0			1,180	3 (D-d)
204,0	×	84,0	×	2,0	×	2,0		360,0	2,604	3 (D-d)
204,0	×	104,0	×	2,0	×	2,0		300,0	2,321	3 (D-d)
204,0	×	129,0	×	2,0	×	2,0		225,0	1,882	3 (D-d)
204,0	×	154,0	×	2,0	×	2,0		150,0	1,349	3 (D-d)
206,0	×	106,0	×	3,0	×	3,0		300,0	3,527	3 (D-d)
206,0	×	156,0	×	3,0	×	3,0		150,0	2,046	3 (D-d)
219,1	×	88,9	×	2,0	×	2,0		391,0	3,022	3 (D-d)
219,1	×	88,9	×	3,0	×	3,0		391,0	4,533	3 (D-d)
219,1	×	114,3	×	2,0	×	2,0		314,0	2,633	3 (D-d)
219,1	×	114,3	×	3,0	×	3,0		314,0	3,950	3 (D-d)
219,1	×	114,3	×	4,0	×	4,0			5,220	3 (D-d)
219,1	×	139,7	×	2,0	×	2,0		238,0	2,147	3 (D-d)
219,1	×	139,7	×	3,0	×	3,0		238,0	3,220	3 (D-d)
219,1	×	139,7	×	4,0	×	4,0			3,920	3 (D-d)
219,1	×	168,3	×	2,0	×	2,0		152,0	1,483	3 (D-d)
219,1	×	168,3	×	3,0	×	3,0		152,0	2,225	3 (D-d)
219,1	×	168,3	×	4,0	×	4,0			2,810	3 (D-d)
254,0	×	104,0	×	2,0	×	2,0		450,0	4,047	3 (D-d)
254,0	×	129,0	×	2,0	×	2,0		375,0	3,608	3 (D-d)
254,0	×	154,0	×	2,0	×	2,0		300,0	3,075	3 (D-d)
254,0	×	204,0	×	2,0	×	2,0		150,0	1,726	3 (D-d)
256,0	×	106,0	×	3,0	×	3,0		450,0	6,138	3 (D-d)
256,0	×	156,0	×	3,0	×	3,0		300,0	4,657	3 (D-d)
256,0	×	206,0	×	3,0	×	3,0		150,0	2,611	3 (D-d)
273,0	×	114,3	×	2,0	×	2,0		476,0	4,632	3 (D-d)
273,0	×	114,3	×	3,0	×	3,0		476,0	6,948	3 (D-d)
273,0	×	114,3	×	4,0	×	4,0				3 (D-d)
273,0	×	139,7	×	2,0	×	2,0		400,0	4,146	3 (D-d)
273,0	×	139,7	×	3,0	×	3,0		400,0	6,219	3 (D-d)
273,0	×	139,7	×	4,0	×	4,0				3 (D-d)
273,0	×	168,3	×	2,0	×	2,0		314,0	3,482	3 (D-d)

EN LASVERLOOP EN REDUCER

D1	×	D2	×	T	×	T	H	KG	TYPE
273,0	×	168,3	×	3,0	×	3,0	314,0	5,223	3 (D-d)
273,0	×	168,3	×	4,0	×	4,0			3 (D-d)
273,0	×	219,1	×	2,0	×	2,0	162,0	1,999	3 (D-d)
273,0	×	219,1	×	3,0	×	3,0	162,0	2,998	3 (D-d)
273,0	×	219,1	×	4,0	×	4,0		3,620	3 (D-d)
304,0	×	104,0	×	2,0	×	2,0			3 (D-d)
304,0	×	129,0	×	2,0	×	2,0	525,0	5,710	3 (D-d)
304,0	×	154,0	×	2,0	×	2,0	450,0	5,177	3 (D-d)
304,0	×	204,0	×	2,0	×	2,0	300,0	3,828	3 (D-d)
304,0	×	254,0	×	2,0	×	2,0	150,0	2,103	3 (D-d)
306,0	×	156,0	×	3,0	×	3,0	450,0	7,834	3 (D-d)
306,0	×	206,0	×	3,0	×	3,0	300,0	5,788	3 (D-d)
306,0	×	256,0	×	3,0	×	3,0	150,0	3,176	3 (D-d)
323,9	×	114,3	×	2,0	×	2,0	629,0	6,922	3 (D-d)
323,9	×	114,3	×	3,0	×	3,0	629,0	10,382	3 (D-d)
323,9	×	114,3	×	4,0	×	4,0	629,0	13,843	3 (D-d)
323,9	×	139,7	×	2,0	×	2,0	553,0	6,435	3 (D-d)
323,9	×	139,7	×	3,0	×	3,0	553,0	9,653	3 (D-d)
323,9	×	139,7	×	4,0	×	4,0	553,0	12,871	3 (D-d)
323,9	×	168,3	×	2,0	×	2,0	467,0	5,772	3 (D-d)
323,9	×	168,3	×	3,0	×	3,0	467,0	8,657	3 (D-d)
323,9	×	168,3	×	4,0	×	4,0	467,0	11,543	3 (D-d)
323,9	×	219,1	×	2,0	×	2,0	314,0	4,288	3 (D-d)
323,9	×	219,1	×	3,0	×	3,0	314,0	6,433	3 (D-d)
323,9	×	219,1	×	4,0	×	4,0	314,0	8,577	3 (D-d)
323,9	×	273,0	×	2,0	×	2,0	153,0	2,290	3 (D-d)
323,9	×	273,0	×	3,0	×	3,0	153,0	3,434	3 (D-d)
323,9	×	273,0	×	4,0	×	4,0	153,0	4,579	3 (D-d)
355,6	×	168,3	×	3,0	×	3,0	562,0	11,092	3 (D-d)
355,6	×	168,3	×	4,0	×	4,0	562,0	14,790	3 (D-d)
355,6	×	219,1	×	3,0	×	3,0	410,0	8,868	3 (D-d)
355,6	×	219,1	×	4,0	×	4,0	410,0	11,823	3 (D-d)
355,6	×	273,0	×	3,0	×	3,0	248,0	5,869	3 (D-d)
355,6	×	273,0	×	4,0	×	4,0	248,0	7,826	3 (D-d)
355,6	×	323,9	×	3,0	×	3,0	95,0	2,435	3 (D-d)
355,6	×	323,9	×	4,0	×	4,0	95,0	3,247	3 (D-d)

D1	×	D2	×	T	×	T	H	KG	TYPE
356,0	×	156,0	×	3,0	×	3,0	600,0	11,575	3 (D-d)
356,0	×	206,0	×	3,0	×	3,0	450,0	9,529	3 (D-d)
356,0	×	256,0	×	3,0	×	3,0	300,0	6,918	3 (D-d)
356,0	×	306,0	×	3,0	×	3,0	150,0	3,742	3 (D-d)
406,0	×	206,0	×	3,0	×	3,0	600,0	13,836	3 (D-d)
406,0	×	256,0	×	3,0	×	3,0	450,0	11,225	3 (D-d)
406,0	×	306,0	×	3,0	×	3,0	300,0	8,048	3 (D-d)
406,4	×	219,1	×	3,0	×	3,0	562,0	13,243	3 (D-d)
406,4	×	219,1	×	4,0	×	4,0	562,0	17,658	3 (D-d)
406,4	×	273,0	×	3,0	×	3,0	400,0	10,245	3 (D-d)
406,4	×	273,0	×	4,0	×	4,0	400,0	13,660	3 (D-d)
406,4	×	323,9	×	3,0	×	3,0	248,0	6,811	3 (D-d)
406,4	×	323,9	×	4,0	×	4,0	248,0	9,081	3 (D-d)
406,4	×	355,6	×	3,0	×	3,0	152,0	4,376	3 (D-d)
406,4	×	355,6	×	4,0	×	4,0	152,0	5,834	3 (D-d)
457,0	×	323,9	×	3,0	×	3,0			3 (D-d)
457,0	×	323,9	×	4,0	×	4,0			3 (D-d)
457,0	×	355,6	×	3,0	×	3,0			3 (D-d)
457,0	×	355,6	×	4,0	×	4,0			3 (D-d)
457,0	×	406,4	×	3,0	×	3,0			3 (D-d)
457,0	×	406,4	×	4,0	×	4,0			3 (D-d)
508,0	×	323,9	×	3,0	×	3,0	552,0	17,312	3 (D-d)
508,0	×	323,9	×	4,0	×	4,0	552,0	23,083	3 (D-d)
508,0	×	355,6	×	3,0	×	3,0	457,0	14,877	3 (D-d)
508,0	×	355,6	×	4,0	×	4,0	457,0	19,837	3 (D-d)
508,0	×	406,4	×	3,0	×	3,0	305,0	10,502	3 (D-d)
508,0	×	406,4	×	4,0	×	4,0	305,0	14,002	3 (D-d)
508,0	×	457,0	×	3,0	×	3,0			3 (D-d)
508,0	×	457,0	×	4,0	×	4,0			3 (D-d)
609,6	×	406,4	×	3,0	×	3,0	610,0	23,337	3 (D-d)
609,6	×	406,4	×	4,0	×	4,0	610,0	31,116	3 (D-d)
609,6	×	457,2	×	3,0	×	3,0	457,0	18,378	3 (D-d)
609,6	×	457,2	×	4,0	×	4,0	457,0	24,504	3 (D-d)
609,6	×	508,0	×	3,0	×	3,0	305,0	12,835	3 (D-d)
609,6	×	508,0	×	4,0	×	4,0	305,0	17,114	3 (D-d)

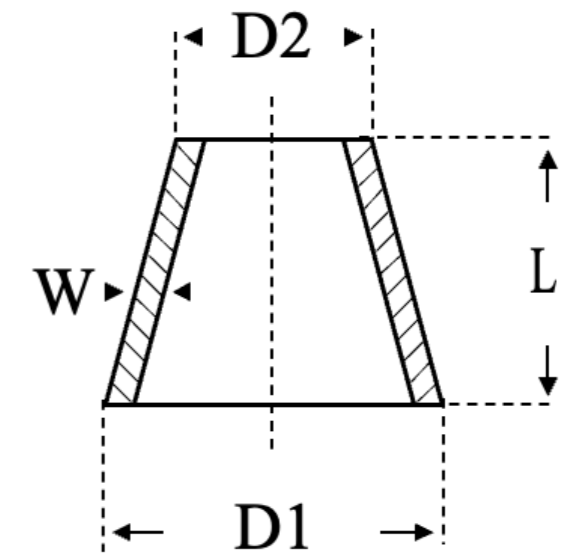
ZUIVEL CONCENTRISCH LASVERLOOP

DAIRY BW CONCENTRIC REDUCER

Gelaste roestvaststalen concentrische lasverlopen volgens DIN 11852 met certificaten volgens EN 10.204 3.1 | Welded stainless steel concentric reducers according to DIN 11852 with certificates according to EN 10.204 3.1

C = ongeslepen / unpolished

G = geslepen K320 / polished G320



DIN-INCH		D1	x	D2	x	W	L
15	x 10	DIN 19,00	x	13,00	x	1,50	11,0
20	x 15	DIN 22,00	x	18,00	x	1,50	7,0
20	x 10	DIN 23,00	x	13,00	x	1,50	18,0
20	x 15	DIN 23,00	x	19,00	x	1,50	7,0
25	x 15	DIN 28,00	x	18,00	x	1,50	18,0
25	x 20	DIN 28,00	x	22,00	x	1,50	11,0
25	x 15	DIN 29,00	x	19,00	x	1,50	18,0
25	x 20	DIN 29,00	x	23,00	x	1,50	11,0
1.¼"	x 1"	31,80	x	25,40	x	1,20	11,0
32	x 20	DIN 34,00	x	22,00	x	1,50	22,0
32	x 25	DIN 34,00	x	28,00	x	1,50	11,0
32	x 20	DIN 35,00	x	23,00	x	1,50	22,0
32	x 25	DIN 35,00	x	29,00	x	1,50	11,0
1.½"	x 1"	38,10	x	25,40	x	1,20	22,0
1.½"	x 1.¼"	38,10	x	31,80	x	1,20	11,0
40	x 20	DIN 40,00	x	22,00	x	1,50	33,0
40	x 25	DIN 40,00	x	28,00	x	1,50	22,0
40	x 32	DIN 40,00	x	34,00	x	1,50	11,0
40	x 20	DIN 41,00	x	23,00	x	1,50	33,0
40	x 25	DIN 41,00	x	29,00	x	1,50	22,0
40	x 32	DIN 41,00	x	35,00	x	1,50	11,0
2"	x 1"	50,80	x	25,40	x	1,20	55,0
2"	x 1.¼"	50,80	x	31,80	x	1,20	44,0
2"	x 1.½"	50,80	x	38,10	x	1,20	33,0
2"	x 1.½"	50,80	x	38,10	x	1,50	33,0
50	x 25	DIN 52,00	x	28,00	x	1,50	44,0
50	x 32	DIN 52,00	x	34,00	x	1,50	33,0

DIN-INCH		D1	x	D2	x	W	L
50	x 40	DIN 52,00	x	40,00	x	1,50	22,0
50	x 25	DIN 53,00	x	29,00	x	1,50	44,0
50	x 32	DIN 53,00	x	35,00	x	1,50	33,0
50	x 40	DIN 53,00	x	41,00	x	1,50	22,0
2.½"	x 1.½"	63,50	x	38,10	x	1,50	51,0
2.½"	x 2"	63,50	x	50,80	x	1,50	29,0
65	x 40	DIN 70,00	x	40,00	x	1,50	51,0
65	x 40	DIN 70,00	x	42,00	x	2,00	51,0
65	x 50	DIN 70,00	x	52,00	x	1,50	29,0
65	x 50	DIN 70,00	x	54,00	x	2,00	29,0
3"	x 1.½"	76,10	x	38,10	x	1,50	89,0
3"	x 2"	76,10	x	50,80	x	1,50	56,0
3"	x 2.½"	76,10	x	63,50	x	1,50	27,0
80	x 50	DIN 85,00	x	52,00	x	2,00	56,0
80	x 50	DIN 85,00	x	54,00	x	2,00	56,0
80	x 65	DIN 85,00	x	70,00	x	2,00	27,0
4"	x 2"	101,60	x	50,80	x	1,50	100,0
4"	x 2.½"	101,60	x	63,50	x	1,50	61,0
4"	x 3"	101,60	x	76,10	x	2,00	34,0
100	x 65	DIN 104,00	x	70,00	x	2,00	61,0
100	x 65	DIN 104,00	x	76,10	x	2,00	58,0
100	x 80	DIN 104,00	x	85,00	x	2,00	34,0
125	x 80	DIN 129,00	x	85,00	x	2,00	79,0
125	x 100	DIN 129,00	x	104,00	x	2,00	45,0
150	x 100	DIN 154,00	x	104,00	x	2,00	90,0
150	x 125	DIN 154,00	x	129,00	x	2,00	45,0
200	x 150	DIN 204,00	x	154,00	x	2,00	45,0

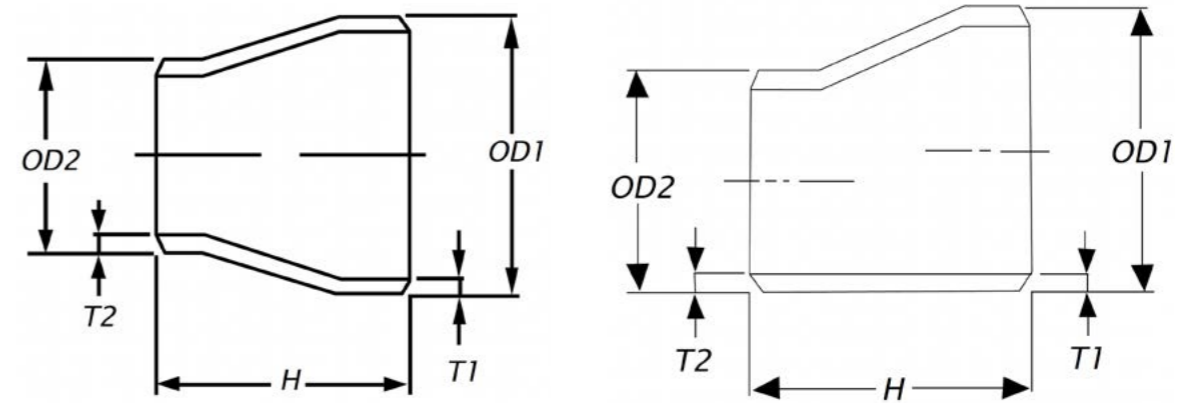
ASTM LASVERLOOP ASTM REDUCER

Concen- en excentrisch gelast | Concen- and eccentric welded

Uitvoeringen en certificaten volgens / Executions and certificates according to: ASTM-A 403

w = gelast / welded

s = naadloos / seamless



D1	x	D2	x	T1	x	T2	INCH - GAS - SCH	H	KG
26,67	x	17,14	x	2,87	x	2,31	¾" x 3/8" SCH 40S	38,1	0,068
26,67	x	21,33	x	2,11	x	2,11	¾" x ½" SCH 10S	38,1	0,043
26,67	x	21,33	x	2,87	x	2,77	¾" x ½" SCH 40S	38,1	0,059
26,67	x	21,33	x	3,91	x	3,73	¾" x ½" SCH 80S	38,1	0,075
26,67	x	21,33	x	5,56	x	4,78	¾" x ½" SCH 160	38,1	0,092
33,40	x	21,33	x	2,77	x	2,11	1" x ½" SCH 10S	50,8	0,089
33,40	x	21,33	x	3,38	x	2,77	1" x ½" SCH 40S	50,8	0,105
33,40	x	21,33	x	4,55	x	3,73	1" x ½" SCH 80S	50,8	0,136
33,40	x	21,33	x	6,35	x	4,78	1" x ½" SCH 160	50,8	0,160
33,40	x	26,67	x	2,77	x	2,11	1" x ¾" SCH 10S	50,8	0,098
33,40	x	26,67	x	3,38	x	2,77	1" x ¾" SCH 40S	50,8	0,116
33,40	x	26,67	x	4,55	x	3,73	1" x ¾" SCH 80S	50,8	0,168
33,40	x	26,67	x	6,35	x	5,56	1" x ¾" SCH 160	50,8	0,174
42,16	x	21,30	x	2,77	x	2,11	1¼" x ½" SCH 10S	50,8	0,140
42,16	x	21,30	x	3,56	x	2,77	1¼" x ½" SCH 40S	50,8	0,146
42,16	x	21,30	x	4,85	x	3,73	1¼" x ½" SCH 80S	50,8	0,196
42,16	x	21,30	x	6,35	x	4,78	1¼" x ½" SCH 160	50,8	0,236
42,16	x	26,67	x	2,77	x	2,11	1¼" x ¾" SCH 10S	50,8	0,138
42,16	x	26,67	x	3,56	x	2,77	1¼" x ¾" SCH 40S	50,8	0,176
42,16	x	26,67	x	4,85	x	3,91	1¼" x ¾" SCH 80S	50,8	0,212
42,16	x	26,67	x	6,35	x	5,56	1¼" x ¾" SCH 160	50,8	0,246
42,16	x	33,40	x	2,77	x	2,77	1¼" x 1" SCH 10S	50,8	0,125
42,16	x	33,40	x	3,56	x	3,38	1¼" x 1" SCH 40S	50,8	0,157
42,16	x	33,40	x	4,85	x	4,55	1¼" x 1" SCH 80S	50,8	0,245
42,16	x	42,16	x	6,35	x	6,35	1¼" x 1" SCH 160	50,8	0,262
48,26	x	21,30	x	2,77	x	2,11	1½" x ½" SCH 10S	63,5	0,154
48,26	x	21,30	x	3,68	x	2,77	1½" x ½" SCH 40S	63,5	0,204
48,26	x	21,30	x	5,08	x	3,73	1½" x ½" SCH 80S	63,5	0,276
48,26	x	21,34	x	7,14	x	4,78	1½" x ½" SCH 160	63,5	0,416
48,26	x	26,67	x	2,77	x	2,11	1½" x ¾" SCH 10S	63,5	0,156

D1	x	D2	x	T1	x	T2	INCH - GAS - SCH	H	KG
48,26	x	26,67	x	3,68	x	2,87	1½" x ¾" SCH 40S	63,5	0,201
48,26	x	26,67	x	5,08	x	3,91	1½" x ¾" SCH 80S	63,5	0,294
48,26	x	26,67	x	7,14	x	5,56	1½" x ¾" SCH 160	63,5	0,388
48,26	x	33,40	x	2,77	x	2,77	1½" x 1" SCH 10S	63,5	0,170
48,26	x	33,40	x	3,68	x	3,38	1½" x 1" SCH 40S	63,5	0,219
48,26	x	33,40	x	5,08	x	4,55	1½" x 1" SCH 80S	63,5	0,308
48,26	x	48,26	x	7,14	x	6,35	1½" x 1" SCH 160	63,5	0,398
48,26	x	42,16	x	2,77	x	2,77	1½" x 1¼" SCH 10S	63,5	0,195
48,26	x	42,16	x	3,68	x	3,56	1½" x 1¼" SCH 40S	63,5	0,263
48,26	x	42,16	x	5,08	x	4,85	1½" x 1¼" SCH 80S	63,5	0,331
48,26	x	42,16	x	7,14	x	6,35	1½" x 1¼" SCH 160	63,5	0,420
60,33	x	21,30	x	2,77	x	2,11	2" x ½" SCH 10S	76,2	0,294
60,33	x	21,30	x	3,91	x	2,77	2" x ½" SCH 40S	76,2	0,344
60,33	x	21,30	x	5,54	x	3,73	2" x ½" SCH 80S	76,2	0,426
60,33	x	21,34	x	8,74	x	4,78	2" x ½" SCH 160	76,2	0,616
60,33	x	26,67	x	2,77	x	2,11	2" x ¾" SCH 10S	76,2	0,214
60,33	x	26,67	x	3,91	x	2,87	2" x ¾" SCH 40S	76,2	0,298
60,33	x	26,67	x	5,54	x	3,91	2" x ¾" SCH 80S	76,2	0,458
60,33	x	26,67	x	8,74	x	5,56	2" x ¾" SCH 160	76,2	0,668
60,33	x	33,40	x	2,77	x	2,77	2" x 1" SCH 10S	76,2	0,237
60,33	x	33,40	x	3,91	x	3,38	2" x 1" SCH 40S	76,2	0,322
60,33	x	33,40	x	5,54	x	4,55	2" x 1" SCH 80S	76,2	0,458
60,33	x	33,40	x	8,74	x	6,35	2" x 1" SCH 160	76,2	0,670
60,33	x	42,16	x	2,77	x	2,77	2" x 1¼" SCH 10S	76,2	0,258
60,33	x	42,16	x	3,91	x	3,56	2" x 1¼" SCH 40S	76,2	0,352
60,33	x	42,16	x	5,54	x	4,85	2" x 1¼" SCH 80S	76,2	0,525
60,33	x	42,16	x	8,74	x	6,35	2" x 1¼" SCH 160	76,2	0,744
60,33	x	48,26	x	2,77	x	2,77	2" x 1½" SCH 10S	76,2	0,273
60,33	x	48,26	x	3,91	x	3,68	2" x 1½" SCH 40S	76,2	0,372
60,33	x	48,26	x	5,54	x	5,08	2" x 1½" SCH 80S	76,2	0,544

ASTM LASVERLOOP ASTM REDUCER

D1	x	D2	x	T1	x	T2	INCH - GAS - SCH	H	KG
60,33	x	48,26	x	8,74	x	7,14	2" x 1.½" SCH 160	76,2	0,698
73,03	x	33,40	x	3,05	x	2,77	2.½" x 1" SCH 10S	88,9	0,370
73,03	x	33,40	x	5,16	x	3,38	2.½" x 1" SCH 40S	88,9	0,630
73,03	x	33,40	x	7,01	x	4,55	2.½" x 1" SCH 80S	88,9	0,739
73,03	x	42,16	x	3,05	x	2,77	2.½" x 1.¼" SCH 10S	88,9	0,394
73,03	x	42,16	x	5,16	x	3,56	2.½" x 1.¼" SCH 40S	88,9	0,670
73,03	x	42,16	x	7,01	x	4,85	2.½" x 1.¼" SCH 80S	88,9	0,825
73,03	x	48,30	x	3,05	x	2,77	2.½" x 1.½" SCH 10S	88,9	0,396
73,03	x	48,30	x	5,16	x	3,68	2.½" x 1.½" SCH 40S	88,9	0,661
73,03	x	48,30	x	7,01	x	5,08	2.½" x 1.½" SCH 80S	88,9	0,856
73,03	x	60,30	x	3,05	x	2,77	2.½" x 2" SCH 10S	88,9	0,432
73,03	x	60,30	x	5,16	x	3,91	2.½" x 2" SCH 40S	88,9	0,724
73,03	x	60,30	x	7,01	x	5,54	2.½" x 2" SCH 80S	88,9	0,938
88,90	x	33,40	x	3,05	x	2,77	3" x 1" SCH 10S	88,9	0,408
88,90	x	33,40	x	5,49	x	3,38	3" x 1" SCH 40S	88,9	0,716
88,90	x	33,40	x	7,62	x	4,55	3" x 1" SCH 80S	88,9	0,888
88,90	x	42,16	x	3,05	x	2,77	3" x 1.¼" SCH 10S	88,9	0,430
88,90	x	42,16	x	5,49	x	3,56	3" x 1.¼" SCH 40S	88,9	0,775
88,90	x	42,16	x	7,62	x	4,85	3" x 1.¼" SCH 80S	88,9	1,037
88,90	x	48,26	x	3,05	x	2,77	3" x 1.½" SCH 10S	88,9	0,444
88,90	x	48,26	x	5,49	x	3,68	3" x 1.½" SCH 40S	88,9	0,783
88,90	x	48,26	x	7,62	x	5,08	3" x 1.½" SCH 80S	88,9	1,105
88,90	x	60,30	x	3,05	x	2,77	3" x 2" SCH 10S	88,9	0,478
88,90	x	60,30	x	5,49	x	3,91	3" x 2" SCH 40S	88,9	0,846
88,90	x	60,30	x	7,62	x	5,54	3" x 2" SCH 80S	88,9	1,178
88,90	x	73,03	x	3,05	x	3,05	3" x 2.½" SCH 10S	88,9	0,548
88,90	x	73,03	x	5,49	x	5,16	3" x 2.½" SCH 40S	88,9	0,983
88,90	x	73,03	x	7,62	x	7,01	3" x 2.½" SCH 80S	88,9	1,291
101,60	x	60,30	x	3,05	x	2,77	3.½" x 2" SCH 10S	101,6	0,620
101,60	x	60,30	x	5,74	x	3,91	3.½" x 2" SCH 40S	101,6	1,100
101,60	x	60,30	x	8,05	x	5,54	3.½" x 2" SCH 80S	101,6	1,510
101,60	x	73,30	x	3,05	x	3,05	3.½" x 2.½" SCH 10S	101,6	0,660
101,60	x	73,30	x	5,74	x	5,16	3.½" x 2.½" SCH 40S	101,6	1,120
101,60	x	73,30	x	8,05	x	7,01	3.½" x 2.½" SCH 80S	101,6	1,630
101,60	x	88,90	x	3,05	x	3,05	3.½" x 3" SCH 10S	101,6	0,774

D1	x	D2	x	T1	x	T2	INCH - GAS - SCH	H	KG
101,60	x	88,90	x	5,74	x	5,49	3.½" x 3" SCH 40S	101,6	1,340
101,60	x	88,90	x	8,05	x	7,62	3.½" x 3" SCH 80S	101,6	1,780
114,30	x	48,26	x	3,05	x	2,77	4" x 1.½" SCH 10S	101,6	0,630
114,30	x	48,26	x	6,02	x	3,68	4" x 1.½" SCH 40S	101,6	1,241
114,30	x	48,26	x	8,56	x	5,08	4" x 1.½" SCH 80S	101,6	1,730
114,30	x	60,30	x	3,05	x	2,77	4" x 2" SCH 10S	101,6	0,656
114,30	x	60,30	x	6,02	x	3,91	4" x 2" SCH 40S	101,6	1,270
114,30	x	60,30	x	8,56	x	5,54	4" x 2" SCH 80S	101,6	1,780
114,30	x	73,03	x	3,05	x	3,05	4" x 2.½" SCH 10S	101,6	0,706
114,30	x	73,03	x	6,02	x	5,16	4" x 2.½" SCH 40S	101,6	1,370
114,30	x	73,03	x	8,56	x	7,01	4" x 2.½" SCH 80S	101,6	2,007
114,30	x	88,90	x	3,05	x	3,05	4" x 3" SCH 10S	101,6	0,748
114,30	x	88,90	x	6,02	x	5,49	4" x 3" SCH 40S	101,6	1,450
114,30	x	88,90	x	8,56	x	7,62	4" x 3" SCH 80S	101,6	2,129
114,30	x	101,60	x	3,05	x	3,05	4" x 3.½" SCH 10S	101,6	1,570
114,30	x	101,60	x	6,02	x	5,74	4" x 3.½" SCH 40S	101,6	1,595
114,30	x	101,60	x	8,56	x	8,05	4" x 3.½" SCH 80S	101,6	2,230
141,30	x	60,30	x	3,40	x	2,77	5" x 2" SCH 10S	127,0	1,270
141,30	x	60,30	x	6,55	x	3,91	5" x 2" SCH 40S	127,0	2,440
141,30	x	73,30	x	3,40	x	3,05	5" x 2.½" SCH 10S	127,0	1,490
141,30	x	73,30	x	6,55	x	5,16	5" x 2.½" SCH 40S	127,0	2,190
141,30	x	88,90	x	3,4	x	3,05	5" x 3" SCH 10S	127,0	1,200
141,30	x	88,90	x	6,55	x	5,49	5" x 3" SCH 40S	127,0	2,270
141,30	x	88,90	x	9,53	x	7,62	5" x 3" SCH 80S	127,0	3,547
141,30	x	101,60	x	3,40	x	3,05	5" x 3.½" SCH 10S	127,0	1,600
141,30	x	101,60	x	6,55	x	5,74	5" x 3.½" SCH 40S	127,0	2,260
141,30	x	101,60	x	9,53	x	8,05	5" x 3.½" SCH 80S	127,0	3,770
141,30	x	114,30	x	3,4	x	3,05	5" x 4" SCH 10S	127,0	1,320
141,30	x	114,30	x	6,55	x	6,02	5" x 4" SCH 40S	127,0	2,500
141,30	x	114,30	x	9,53	x	8,56	5" x 4" SCH 80S	127,0	3,769
168,28	x	60,30	x	3,40	x	2,77	6" x 2" SCH 10S	139,7	1,740
168,28	x	60,30	x	7,11	x	3,91	6" x 2" SCH 40S	139,7	3,010
168,28	x	73,30	x	3,40	x	3,05	6" x 2.½" SCH 10S	139,7	1,350
168,28	x	73,30	x	7,11	x	5,16	6" x 2.½" SCH 40S	139,7	2,740
168,28	x	88,90	x	3,4	x	3,05	6" x 3" SCH 10S	139,7	1,500

ASTM LASVERLOOP

ASTM REDUCER

D1 × D2 × T1 × T2	INCH - GAS - SCH	H	KG
168,28 × 88,90 × 8,18 × 5,49	6" × 3" SCH 40S	139,7	3,040
168,28 × 88,90 × 10,97 × 7,62	6" × 3" SCH 80S	139,7	5,030
168,28 × 101,60 × 3,40 × 3,05	6" × 3½" SCH 10S	139,7	1,485
168,28 × 101,60 × 7,11 × 5,74	6" × 3½" SCH 40S	139,7	3,990
168,28 × 101,60 × 10,97 × 8,05	6" × 3½" SCH 80S	139,7	5,530
168,28 × 114,30 × 3,4 × 3,05	6" × 4" SCH 10S	139,7	1,620
168,28 × 114,30 × 7,11 × 6,02	6" × 4" SCH 40S	139,7	3,300
168,28 × 114,30 × 10,97 × 8,56	6" × 4" SCH 80S	139,7	5,440
168,28 × 141,30 × 3,4 × 3,40	6" × 5" SCH 10S	139,7	1,750
168,28 × 141,30 × 7,11 × 6,55	6" × 5" SCH 40S	139,7	3,570
168,28 × 141,30 × 10,97 × 9,53	6" × 5" SCH 80S	139,7	5,710
219,08 × 114,30 × 3,76 × 3,05	8" × 4" SCH 10S	152,4	2,560
219,08 × 114,30 × 8,18 × 6,02	8" × 4" SCH 40S	152,4	5,100
219,08 × 114,30 × 12,70 × 8,56	8" × 4" SCH 80S	152,4	8,430
219,08 × 141,30 × 3,76 × 3,40	8" × 5" SCH 10S	152,4	2,700
219,08 × 141,30 × 8,18 × 6,55	8" × 5" SCH 40S	152,4	5,400
219,08 × 141,30 × 12,70 × 9,53	8" × 5" SCH 80S	152,4	8,830
219,08 × 168,28 × 3,76 × 3,40	8" × 6" SCH 10S	152,4	2,850
219,08 × 168,28 × 8,18 × 7,11	8" × 6" SCH 40S	152,4	5,710
219,08 × 168,28 × 12,7 × 10,97	8" × 6" SCH 80S	152,4	9,240
273,05 × 168,28 × 4,19 × 3,40	10" × 6" SCH 10S	177,8	3,870
273,05 × 168,28 × 9,27 × 7,11	10" × 6" SCH 40S	177,8	8,780
273,05 × 168,30 × 12,70 × 10,97	10" × 6" SCH 80S	177,8	13,500
273,05 × 219,08 × 4,19 × 3,76	10" × 8" SCH 10S	177,8	4,210
273,05 × 219,08 × 9,27 × 8,18	10" × 8" SCH 40S	177,8	9,580
273,05 × 219,10 × 12,70 × 12,70	10" × 8" SCH 80S	177,8	14,220
323,85 × 168,30 × 4,57 × 3,40	12" × 6" SCH 10S	203,2	5,730
323,85 × 168,30 × 10,31 × 7,11	12" × 6" SCH 40S	203,2	12,400
323,85 × 168,28 × 4,57 × 3,40	12" × 8" SCH 10S	203,2	6,110
323,85 × 168,28 × 9,53 × 7,11	12" × 8" SCH 40S	203,2	13,700
323,85 × 219,10 × 17,48 × 12,70	12" × 8" SCH 80S	203,2	19,070
323,85 × 273,05 × 4,57 × 4,19	12" × 10" SCH 10S	203,2	6,550
323,85 × 273,05 × 9,53 × 9,27	12" × 10" SCH 40S	203,2	14,700
323,85 × 273,05 × 17,48 × 12,70	12" × 10" SCH 80S	203,2	19,480
355,60 × 273,05 × 4,78 × 4,19	14" × 10" SCH 10S	330,2	13,210

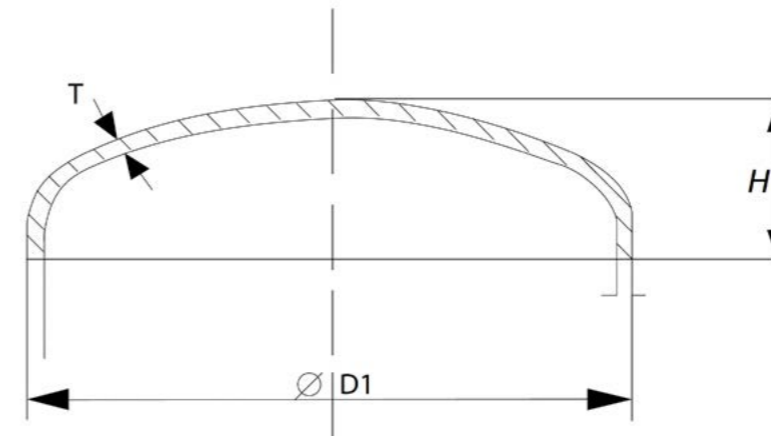
D1 × D2 × T1 × T2	INCH - GAS - SCH	H	KG
355,60 × 273,05 × 9,53 × 9,27	14" × 10" SCH 40S	330,2	26,410
355,60 × 323,85 × 4,78 × 4,57	14" × 12" SCH 10S	330,2	14,270
355,60 × 323,85 × 9,53 × 9,53	14" × 12" SCH 40S	330,2	28,550
406,40 × 273,05 × 6,35 × 4,19	16" × 10" SCH 10S	355,6	15,370
406,40 × 273,05 × 12,70 × 9,27	16" × 10" SCH 40S	355,6	30,750
406,40 × 323,85 × 4,78 × 4,57	16" × 12" SCH 10S	355,6	16,520
406,40 × 323,85 × 9,53 × 9,53	16" × 12" SCH 40S	355,6	33,050
406,40 × 355,60 × 4,78 × 4,78	16" × 14" SCH 10S	355,6	17,240
406,40 × 355,60 × 9,53 × 9,53	16" × 14" SCH 40S	355,6	34,480

EN LASKAP EN CAP

Uitvoeringen volgens ISO of metrisch / Executions according to ISO or metric

Certificaten volgens bovenstaande normen en EN 10204 3.1 /

Certificates according to above mentioned standards and EN 10204 3.1



D1	x	T	H	KG	TYPE
17,2	x	2,0	11,5	0,009	ISO
20,0	x	2,0	12,0	0,011	Metric
21,3	x	2,0	9,0	0,015	ISO
25,0	x	2,0	12,0	0,016	Metric
26,9	x	2,0	10,5	0,015	ISO
28,0	x	2,0	12,0	0,022	Metric
30,0	x	2,0	12,0	0,024	Metric
33,7	x	2,0	12,5	0,023	ISO
33,7	x	3,0	14,5	0,035	ISO
38,0	x	2,0	15,0	0,034	Metric
40,0	x	2,0	14,0	0,033	Metric
42,4	x	2,0	17,0	0,042	ISO
42,4	x	3,0	18,0	0,063	ISO
44,5	x	2,0	16,0	0,042	Metric
48,3	x	2,0	17,0	0,050	ISO
48,3	x	3,0	23,0	0,087	ISO
50,8	x	2,0	19,0	0,055	ISO
54,0	x	2,0	19,0	0,058	Metric
57,0	x	2,0	22,0	0,076	Metric
57,0	x	3,0	22,0	0,110	Metric
60,3	x	2,0	20,0	0,076	ISO
60,3	x	3,0	22,0	0,115	ISO
63,5	x	2,0	19,0	0,076	Metric
70,0	x	2,0	21,0	0,097	Metric
76,1	x	2,0	27,0	0,131	ISO
76,1	x	3,0	29,0	0,196	ISO
84,0	x	2,0	23,0	0,131	Metric

D1	x	T	H	KG	TYPE
88,9	x	2,0	29,0	0,166	ISO
88,9	x	3,0	30,0	0,249	ISO
101,6	x	2,0	26,0	0,187	ISO
101,6	x	3,0	27,0	0,280	ISO
104,0	x	2,0	24,0	0,187	Metric
108,0	x	2,0	32,0	0,246	Metric
108,0	x	3,0	34,0	0,370	Metric
114,3	x	2,0	32,0	0,246	ISO
114,3	x	3,0	32,0	0,369	ISO
114,3	x	4,0	32,0	0,492	ISO
129,0	x	2,0	34,0	0,314	Metric
131,0	x	3,0	35,0	0,470	Metric
133,0	x	2,0	34,0	0,314	Metric
133,0	x	3,0	34,0	0,470	Metric
133,0	x	4,0	34,0	0,571	Metric
139,7	x	2,0	35,0	0,372	ISO
139,7	x	3,0	36,0	0,532	ISO
139,7	x	4,0	36,0	0,709	ISO
154,0	x	2,0	41,0	0,444	Metric
156,0	x	3,0	42,0	0,670	Metric
159,0	x	2,0	42,0	0,444	Metric
159,0	x	3,0	42,0	0,670	Metric
159,0	x	4,0	42,0	0,785	Metric
168,3	x	2,0	40,0	0,518	ISO
168,3	x	3,0	43,0	0,776	ISO
168,3	x	4,0	43,0	1,150	ISO
204,0	x	2,0	50,0	0,754	Metric

D1	x	T	H	KG	TYPE
206,0	x	3,0	50,0	1,130	Metric
219,1	x	2,0	50,0	0,849	ISO
219,1	x	3,0	51,0	1,274	ISO
219,1	x	4,0	51,0	1,872	ISO
254,0	x	2,0	55,0	1,078	Metric
256,0	x	3,0	55,0	1,620	Metric
273,0	x	2,0	63,0	1,310	ISO
273,0	x	3,0	62,0	1,966	ISO
273,0	x	4,0	62,0	2,621	ISO
304,0	x	2,0	68,0	1,646	Metric
306,0	x	3,0	70,0	2,470	Metric
323,9	x	2,0	72,0	1,814	ISO
323,9	x	3,0	72,0	2,720	ISO
323,9	x	4,0	72,0	3,627	ISO
355,6	x	3,0	89,0	3,516	ISO
355,6	x	4,0	89,0	5,315	ISO
406,4	x	3,0	98,0	4,523	ISO
406,4	x	4,0	98,0	6,534	ISO
457,2	x	2,9	107,0	5,494	ISO
457,2	x	4,0	107,0	7,878	ISO
508,0	x	2,9	120,0	6,558	ISO
508,0	x	4,0	120,0	10,289	ISO
609,6	x	3,0	140,0	9,232	ISO
609,6	x	4,0	140,0	14,130	ISO

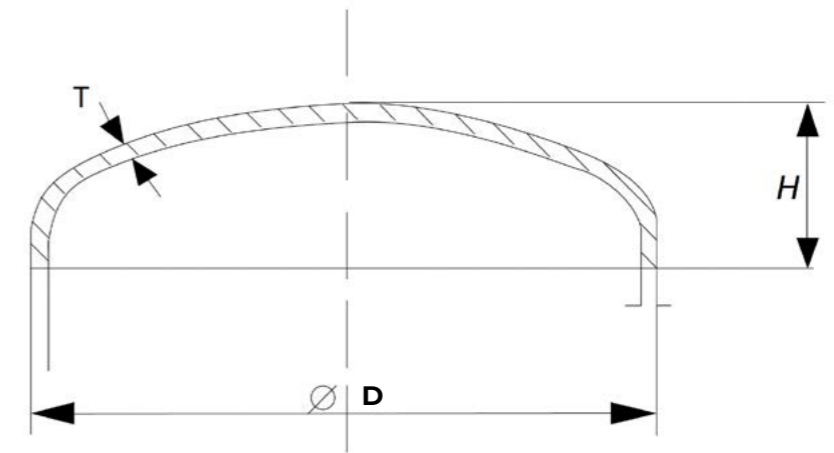
ZUIVEL LASKAP DAIRY CAP

Roestvaststalen laskappen volgens DIN 11852 met certificaten volgens EN 10.204 3.1

Stainless steel caps according to DIN 11852 with certificates according to EN 10.204 3.1

C = ongeslepen / unpolished

G = geslepen K320 / polished G320

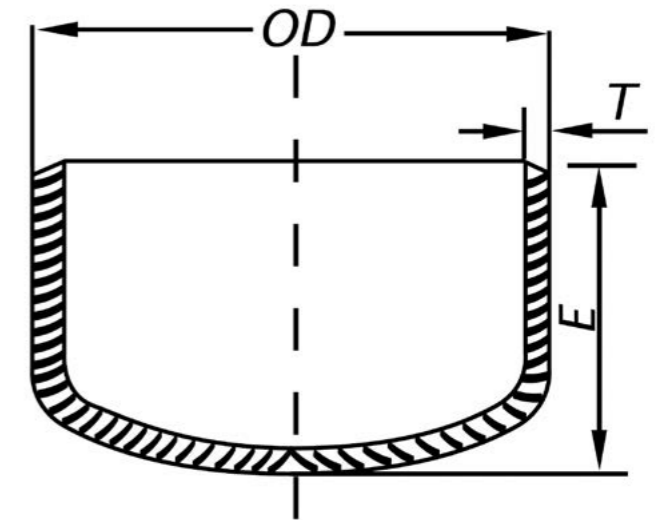


D1	x	T	D	x	T	H
15		DIN	18,00	×	1,50	13,00
15		DIN	19,00	×	1,50	13,00
15		DIN	20,00	×	2,00	15,00
20		DIN	22,00	×	1,50	
20		DIN	23,00	×	1,50	
20		DIN	24,00	×	2,00	
	1"		25,40	×	1,25	11,00
25		DIN	28,00	×	1,50	
25		DIN	29,00	×	1,50	
25		DIN	30,00	×	2,00	12,00
	1.¼"		31,80	×	1,25	
32		DIN	34,00	×	1,50	
32		DIN	35,00	×	1,50	
32		DIN	36,00	×	2,00	
	1.½"		38,10	×	1,50	14,00
40		DIN	40,00	×	1,50	14,00
40		DIN	41,00	×	1,50	
40		DIN	42,00	×	2,00	
	2"		50,80	×	1,50	18,00
50		DIN	52,00	×	1,50	
50		DIN	53,00	×	1,50	
50		DIN	54,00	×	2,00	18,00
	2.½"		63,50	×	1,50	16,00
65		DIN	70,00	×	2,00	18,00
	3"		76,10	×	1,50	26,00
80		DIN	85,00	×	2,00	
	4"		101,60	×	1,50	25,00

D1	x	T	D	x	T	H
	4"		101,60	×	2,00	25,00
100		DIN	104,00	×	2,00	24,00
125		DIN	129,00	×	2,00	34,00
150		DIN	154,00	×	2,00	38,00
200		DIN	204,00	×	2,00	69,00

ASTM LASKAP ASTM CAP

Uitvoeringen en certificaten volgens / Executions and certificates according to: ASTM-A 403



OD	x	T	INCH - GAS - SCH		E	KG
21,34	x	2,11	½"	SCH 10S	25,4	0,050
21,34	x	2,77	½"	SCH 40S	25,4	0,070
21,34	x	3,73	½"	SCH 80S	25,4	0,080
26,67	x	2,11	¾"	SCH 10S	25,4	0,060
26,67	x	2,87	¾"	SCH 40S	25,4	0,080
26,67	x	3,91	¾"	SCH 80S	25,4	0,090
33,40	x	2,77	1"	SCH 10S	38,1	0,075
33,40	x	3,38	1"	SCH 40S	38,1	0,090
33,40	x	4,55	1"	SCH 80S	38,1	0,110
42,16	x	2,77	1¼"	SCH 10S	38,1	0,100
42,16	x	3,56	1¼"	SCH 40S	38,1	0,130
42,16	x	4,85	1¼"	SCH 80S	38,1	0,160
48,26	x	2,77	1½"	SCH 10S	38,1	0,130
48,26	x	3,68	1½"	SCH 40S	38,1	0,170
48,26	x	5,08	1½"	SCH 80S	38,1	0,220
60,33	x	2,77	2"	SCH 10S	38,1	0,190
60,33	x	3,91	2"	SCH 40S	38,1	0,260
60,33	x	5,54	2"	SCH 80S	38,1	0,350
73,03	x	3,05	2½"	SCH 10S	38,1	0,240
73,03	x	5,16	2½"	SCH 40S	38,1	0,410
73,03	x	7,01	2½"	SCH 80S	38,1	0,510
88,90	x	3,05	3"	SCH 10S	50,8	0,370
88,90	x	5,49	3"	SCH 40S	50,8	0,680
88,90	x	7,56	3"	SCH 80S	50,8	0,920
101,60	x	3,05	3½"	SCH 10S	63,5	0,450
101,60	x	5,74	3½"	SCH 40S	63,5	0,960
101,60	x	8,08	3½"	SCH 80S	63,5	1,300

OD	x	T	INCH - GAS - SCH		E	KG
114,30	x	3,05	4"	SCH 10S	63,5	0,570
114,30	x	6,02	4"	SCH 40S	63,5	1,130
114,30	x	8,56	4"	SCH 80S	63,5	1,510
141,30	x	3,40	5"	SCH 10S	76,2	1,100
141,30	x	6,55	5"	SCH 40S	76,2	2,120
168,28	x	3,40	6"	SCH 10S	88,9	1,410
168,28	x	7,11	6"	SCH 40S	88,9	2,950
168,28	x	10,97	6"	SCH 80S	88,9	4,240
219,08	x	3,76	8"	SCH 10S	101,6	2,470
219,08	x	8,18	8"	SCH 40S	101,6	5,400
219,08	x	12,70	8"	SCH 80S	101,6	7,800
273,05	x	4,19	10"	SCH 10S	127,0	4,510
273,05	x	9,27	10"	SCH 40S	127,0	10,000
273,05	x	12,70	10"	SCH 80S	127,0	13,100
323,85	x	4,57	12"	SCH 10S	152,4	6,670
323,85	x	9,53	12"	SCH 40S	152,4	13,900
323,85	x	12,70	12"	SCH 80S	152,4	17,300
355,60	x	4,78	14"	SCH 10S	165,1	4,780
355,60	x	9,53	14"	SCH 40S	165,1	9,530
406,40	x	4,19	16"	SCH 10S	177,8	14,510
406,40	x	9,53	16"	SCH 40S	177,8	20,000
457,20	x	4,78	18"	SCH 10S	203,2	17,960
457,20	x	9,53	18"	SCH 40S	203,2	31,450
508,00	x	4,78	20"	SCH 10S	228,6	27,220
508,00	x	9,53	20"	SCH 40S	228,6	20,640
609,60	x	4,78	24"	SCH 10S	266,7	34,470
609,60	x	9,53	24"	SCH 40S	266,7	55,000

EN BOORDRINGEN EN WELDING COLLAR

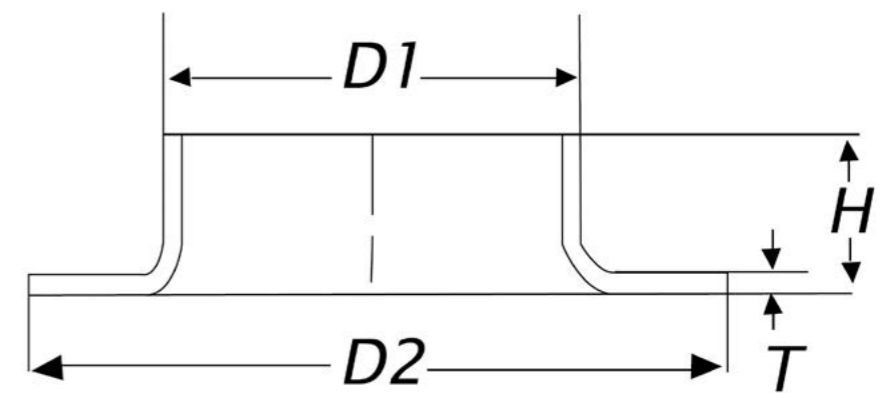
Uitvoeringen en toleranties volgens ISO of metrisch /

Executions and tolerances according to ISO or metric

DIN 2642: op aanvraag / on request

Certificaten volgens bovenstaande normen en EN 10204 3.1 /

Certificates according to above mentioned standards and EN 10204 3.1



D1	T	D2	H	KG	TYPE
17,2	2,00	43	6	0,022	ISO
20,0	2,00	52	7	0,035	Metric
21,3	2,00	47	6	0,026	ISO
21,3	3,00	47	6	0,052	ISO
25,0	2,00	58	7	0,034	Metric
26,9	2,00	58	8	0,039	ISO
26,9	3,00	58	8	0,058	ISO
28,0	2,00	68	8	0,048	Metric
30,0	2,00	68	8	0,045	Metric
32,0	2,00	68	9	0,061	Metric
33,7	2,00	68	9	0,051	ISO
33,7	3,00	68	9	0,077	ISO
38,0	2,00	78	10	0,061	Metric
40,0	2,00				Metric
42,4	2,00	78	10	0,067	ISO
42,4	3,00	78	10	0,101	ISO
44,5	2,00	90	10	0,087	Metric
48,3	2,00	88	10	0,082	ISO
48,3	3,00	88	10	0,123	ISO
51,0	2,00			0,118	Metric
54,0	2,00	102	12	0,114	Metric
56,0	3,00	102	15	0,172	Metric
57,0	2,00	102	13	0,114	Metric
57,0	3,00	102	13	0,172	Metric
60,3	2,00	102	12	0,107	ISO
60,3	3,00	102	12	0,161	ISO
63,5	2,00	115	13	0,123	Metric

D1	T	D2	H	KG	TYPE
70,0	2,00	122	12	0,154	Metric
76,1	2,00	122	12	0,145	ISO
76,1	3,00	122	12	0,217	ISO
84,0	2,00	138	13	0,186	Metric
86,0	3,00	138	15	0,279	Metric
88,9	2,00	139	12	0,185	ISO
88,9	3,00	139	12	0,277	ISO
88,9	4,00	139	12	0,369	ISO
101,6	2,00	150	14	0,206	Metric
101,6	3,00	150	14	0,309	Metric
104,0	2,00	158	16	0,237	Metric
106,0	3,00	158	16	0,356	Metric
108,0	2,00	158	14	0,216	Metric
108,0	3,00	158	14	0,356	Metric
108,0	4,00	158	14	0,428	Metric
114,3	2,00	158	16	0,214	ISO
114,3	3,00	158	16	0,321	ISO
114,3	4,00	158	16	0,428	ISO
129,0	2,00	188	15	0,313	Metric
131,0	3,00	188	20	0,470	Metric
133,0	2,00	188	19	0,313	Metric
133,0	3,00	188	19	0,470	Metric
139,7	2,00	188	16	0,278	ISO
139,7	3,00	188	16	0,417	ISO
139,7	4,00	188	16	0,556	ISO
154,0	2,00	212	19	0,378	Metric
156,0	3,00	212	20	0,566	Metric

EN BOORDRINGEN EN WELDING COLLAR

D1	T	D2	H	KG	TYPE
159,0	2,00	212	17	0,342	Metric
159,0	3,00	212	18	0,513	Metric
159,0	4,00	212	18	0,637	Metric
168,3	2,00	212	17	0,318	ISO
168,3	3,00	212	17	0,477	ISO
168,3	4,00	212	17	0,637	ISO
179,0	2,00	230	19	0,389	Metric
204,0	2,00	268	21	0,543	Metric
206,0	3,00	268	25	0,815	Metric
219,1	2,00	270	18	0,472	ISO
219,1	3,00	270	18	0,708	ISO
219,1	4,00	270	18	0,943	ISO
254,0	2,00	320	24	0,711	Metric
256,0	3,00	320	25	1,066	Metric
273,0	2,00	323	18	0,556	ISO
273,0	3,00	323	18	0,835	ISO
273,0	4,00	323	18	1,113	ISO
304,0	2,00	370	21	0,804	Metric
306,0	3,00	370	21	1,206	Metric
323,9	2,00	370	19	0,641	ISO
323,9	3,00	370	19	0,962	ISO
323,9	4,00	370	19	1,282	ISO
355,6	3,00	430	21	1,518	ISO
355,6	4,00	430	21	2,024	ISO
406,4	3,00	482	21	1,770	ISO
406,4	4,00	482	21	2,360	ISO
457,2	2,90	532	25	2,087	ISO
457,2	4,00	532	25	2,783	ISO
508,0	2,90	587	27	2,286	ISO
508,0	4,00	587	27	3,048	ISO
609,6	3,00	685	26	2,719	ISO
609,6	4,00	685	26	3,625	ISO
711,2	4,00			6,560	ISO

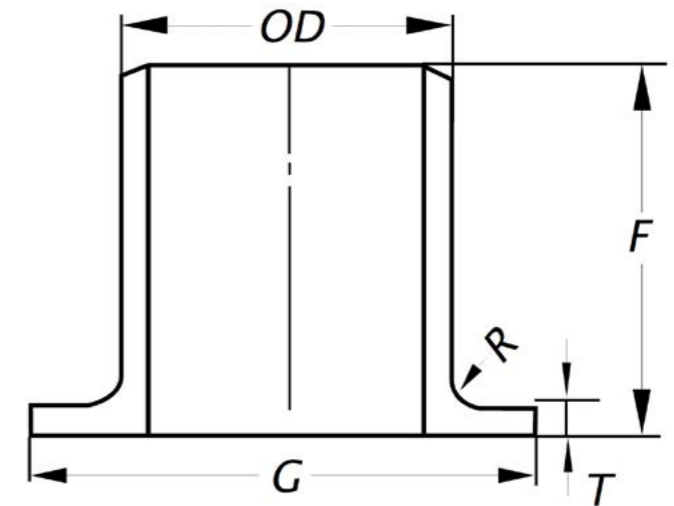


ASTM STUB-END ASTM STUB-END

Uitvoeringen en certificaten volgens / Executions and certificates according to:
ASTM A 403 / MSS SP 43 Type A

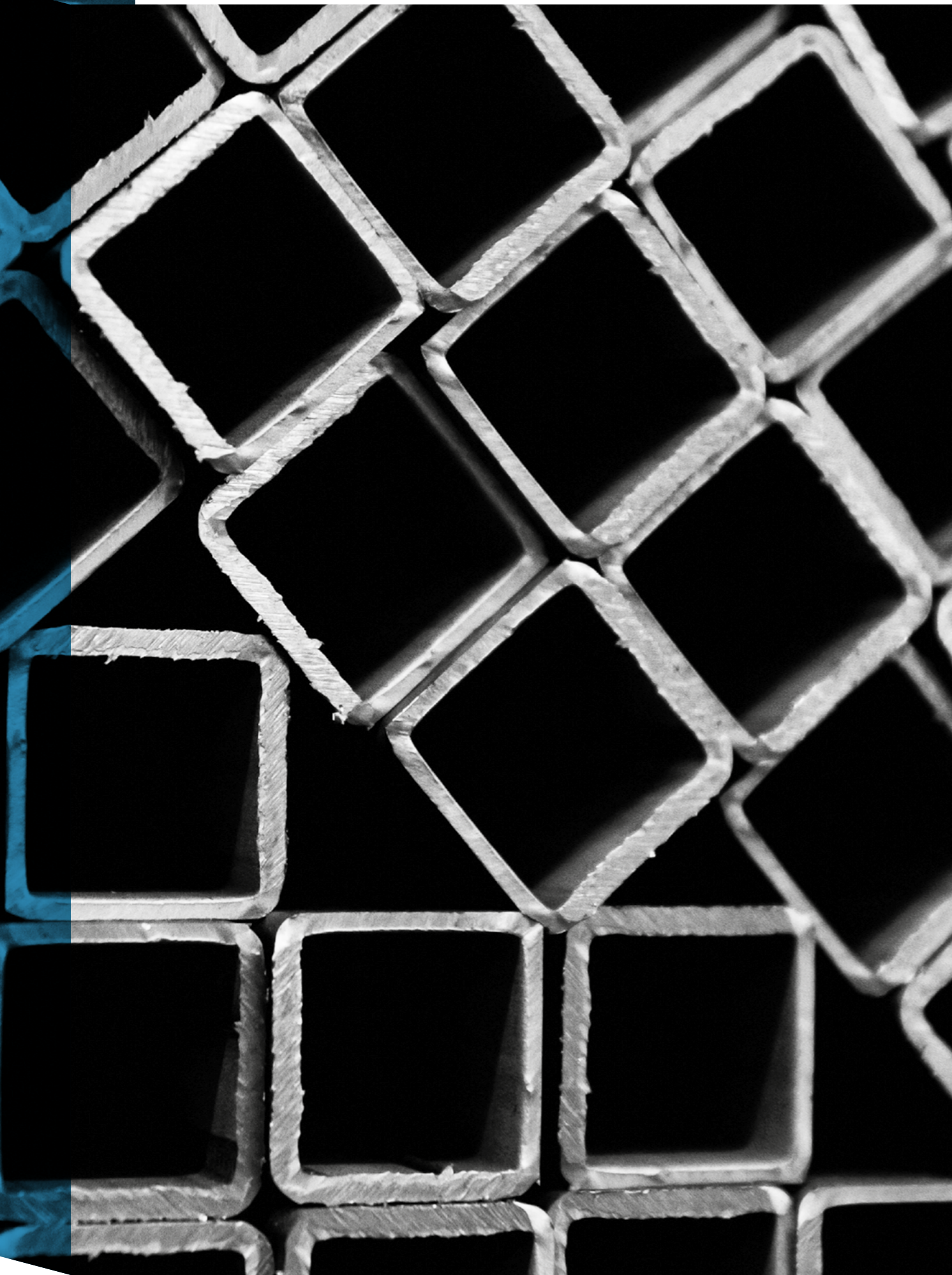
w = gelast / welded

s = naadloos / seamless



OD	x	T	INCH - SCH		F	G	R	KG
21,34	x	2,11	½"	SCH 10S	50,8	34,93	3,30	0,078
21,34	x	2,77	½"	SCH 40S	50,8	34,93	3,30	0,118
21,34	x	3,73	½"	SCH 80S	50,8	34,93	3,30	0,127
26,67	x	2,11	¾"	SCH 10S	50,8	42,88	3,30	0,086
26,67	x	2,87	¾"	SCH 40S	50,8	42,88	3,30	0,154
26,67	x	3,91	¾"	SCH 80S	50,8	42,88	3,30	0,168
33,40	x	2,77	1"	SCH 10S	50,8	50,80	3,30	0,140
33,40	x	3,38	1"	SCH 40S	50,8	50,80	3,30	0,186
33,40	x	4,55	1"	SCH 80S	50,8	50,80	3,30	0,240
42,16	x	2,77	1¼"	SCH 10S	50,8	63,50	4,83	0,208
42,16	x	3,56	1¼"	SCH 40S	50,8	63,50	4,83	0,263
42,16	x	4,85	1¼"	SCH 80S	50,8	63,50	4,83	0,349
48,26	x	2,77	1½"	SCH 10S	50,8	73,02	6,35	0,249
48,26	x	3,68	1½"	SCH 40S	50,8	73,02	6,35	0,376
48,26	x	5,08	1½"	SCH 80S	50,8	73,02	6,35	0,458
60,32	x	2,77	2"	SCH 10S	63,5	92,07	7,87	0,376
60,32	x	3,91	2"	SCH 40S	63,5	92,07	7,87	0,539
60,32	x	5,54	2"	SCH 80S	63,5	92,07	7,87	0,743
73,02	x	3,05	2½"	SCH 10S	63,5	104,77	7,87	0,471
73,02	x	5,16	2½"	SCH 40S	63,5	104,77	7,87	0,797
73,02	x	7,01	2½"	SCH 80S	63,5	104,77	7,87	1,060
88,90	x	3,05	3"	SCH 10S	63,5	127,00	9,65	0,638
88,90	x	5,49	3"	SCH 40S	63,5	127,00	9,65	1,133
88,90	x	7,62	3"	SCH 80S	63,5	127,00	9,65	1,508
101,60	x	3,05	3½"	SCH 10S	76,2	139,70	9,65	0,650
101,60	x	5,74	3½"	SCH 40S	76,2	139,70	9,65	1,380
101,60	x	8,08	3½"	SCH 80S	76,2	139,70	9,65	2,000

OD	x	T	INCH - SCH		F	G	R	KG
114,30	x	3,05	4"	SCH 10S	76,2	157,18	11,18	0,978
114,30	x	6,02	4"	SCH 40S	76,2	157,18	11,18	1,812
114,30	x	8,56	4"	SCH 80S	76,2	157,18	11,18	2,523
141,30	x	3,40	5"	SCH 10S	76,2	185,75	11,18	1,237
141,30	x	6,55	5"	SCH 40S	76,2	185,75	11,18	2,537
141,30	x	9,53	5"	SCH 80S	76,2	185,75	11,18	3,601
168,27	x	3,40	6"	SCH 10S	88,9	215,90	12,70	1,950
168,27	x	7,11	6"	SCH 40S	88,9	215,90	12,70	3,720
219,08	x	3,76	8"	SCH 10S	101,6	269,88	12,70	3,100
219,08	x	8,18	8"	SCH 40S	101,6	269,88	12,70	5,890
273,05	x	4,19	10"	SCH 10S	127,0	323,85	12,70	4,860
273,05	x	9,27	10"	SCH 40S	127,0	323,85	12,70	10,420
323,85	x	4,57	12"	SCH 10S	152,4	381,00	12,70	7,110
323,85	x	9,53	12"	SCH 40S	152,4	381,00	12,70	14,950
355,60	x	4,78	14"	SCH 10S	152,4	412,75	12,70	7,750



CONTACT

Benieuwd naar wat we voor jou kunnen betekenen? Onze medewerkers staan voor u klaar. Neem geheel vrijblijvend contact met ons op.



Bel 0515 580 880

Op werkdagen van 08:00 - 17:00



Stuur een Whatsapp

0515 580 880



Stuur een E-mail

info@nedinox.nl



Nedinox B.V.

De Marne 16-18 | 8701 PT | Bolsward





Nedinox B.V. | De marne 16 - 18 | 8701 PT Bolsward
+31 515 580 880 | info@nedinox.nl | nedinox.nl